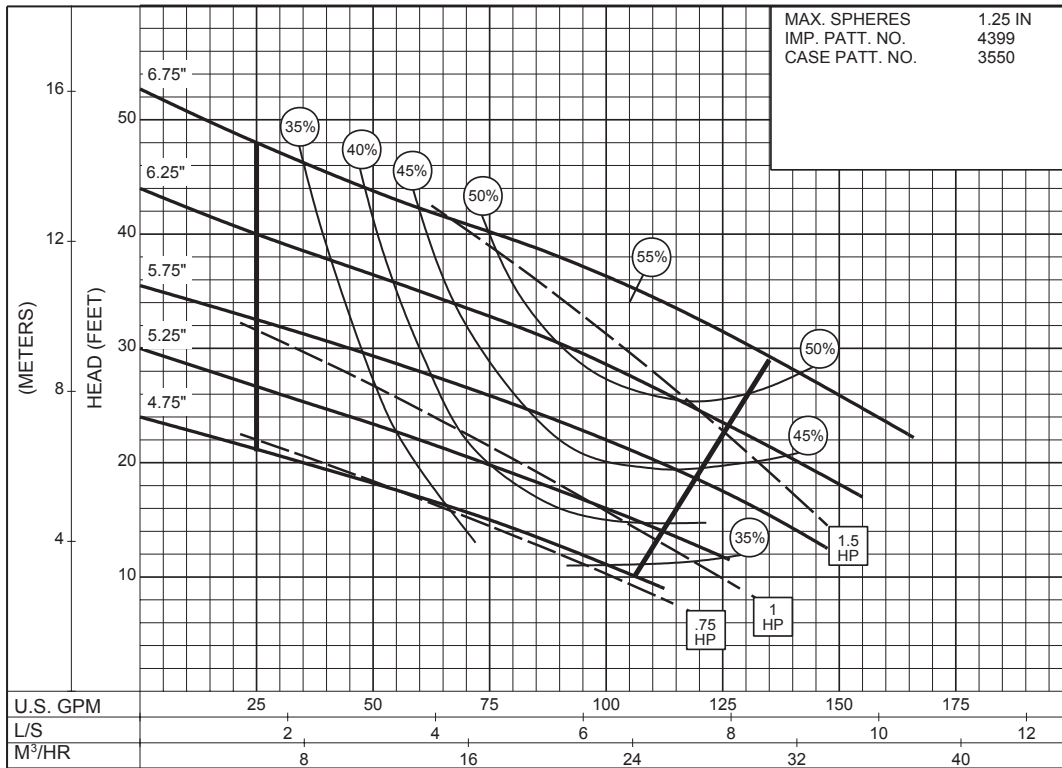


# 2 x 2 x 7 SERIES 640

ENCLOSED IMPELLER

SIZE : 2x2x7      TYPE : 640      IMPELLER : Enclosed      R. P. M. : 1750

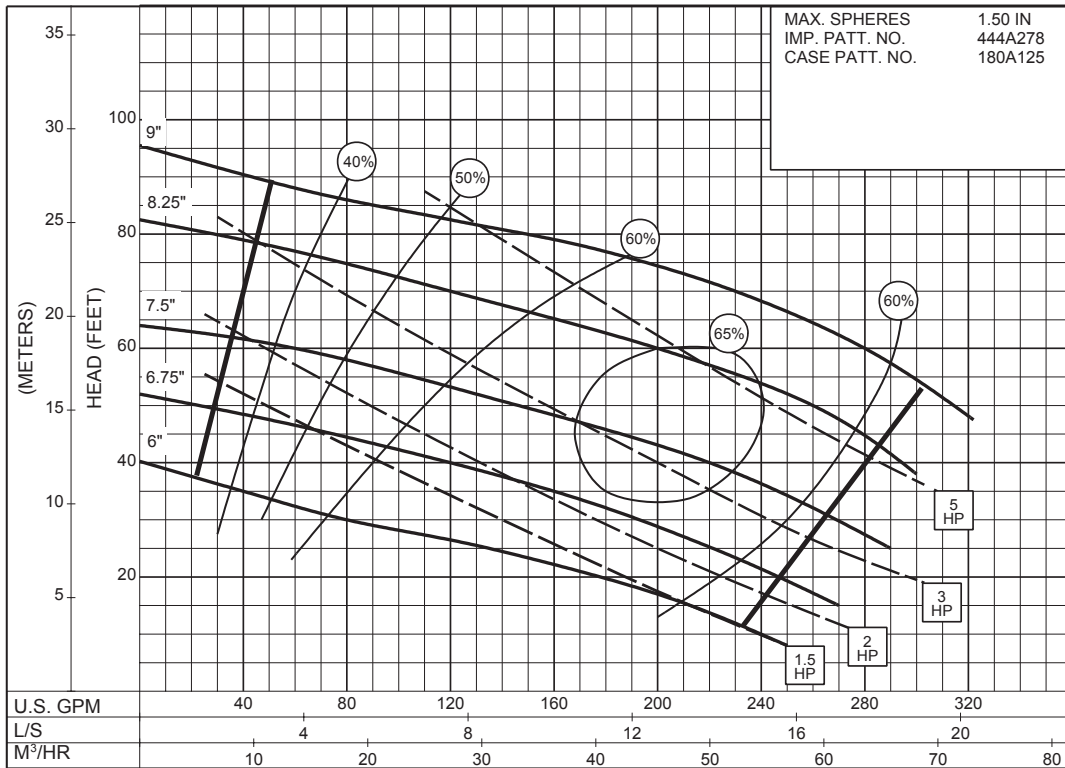


1750  
RPM

**2 x 2 x 9**  
**SERIES 640**

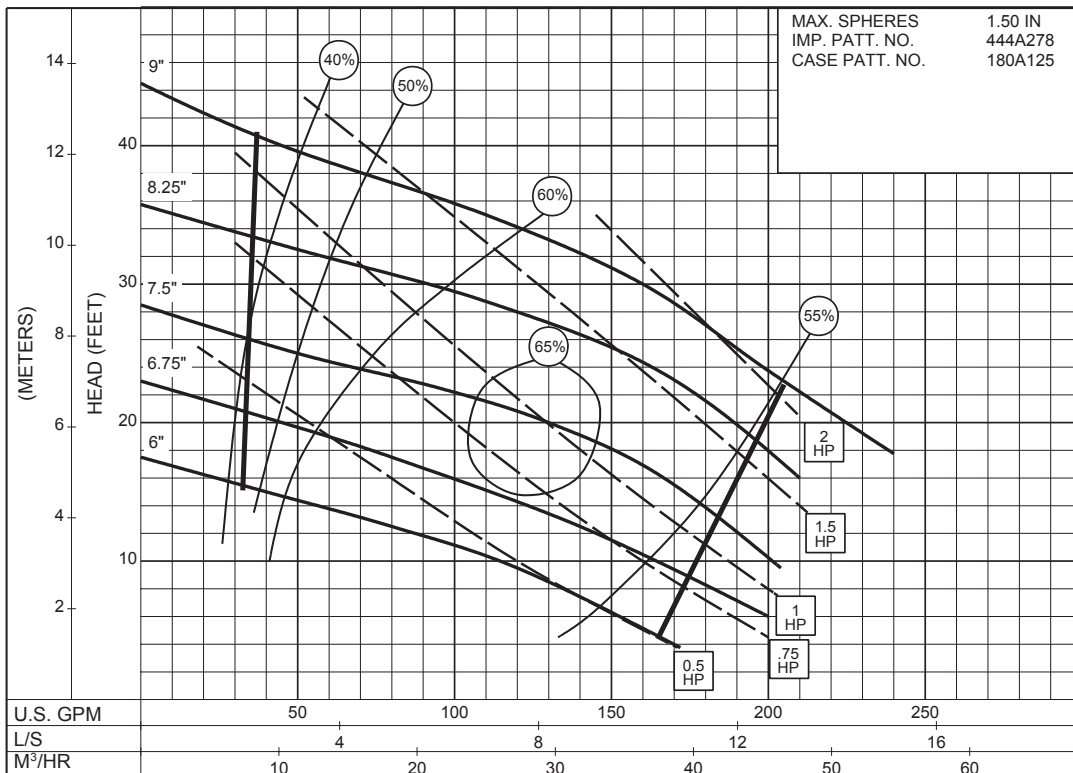
ENCLOSED IMPELLER

SIZE : 2x2x9 TYPE : 640 IMPELLER : Enclosed R. P. M. : 1750



**1750**  
RPM

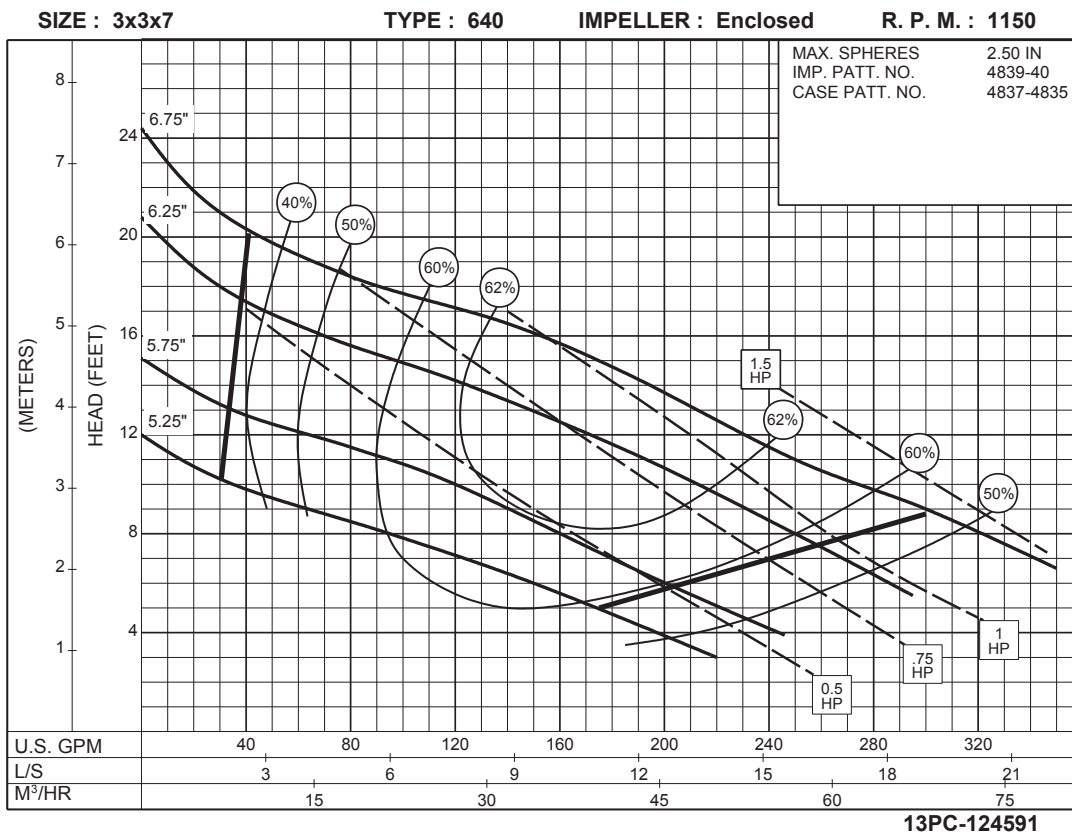
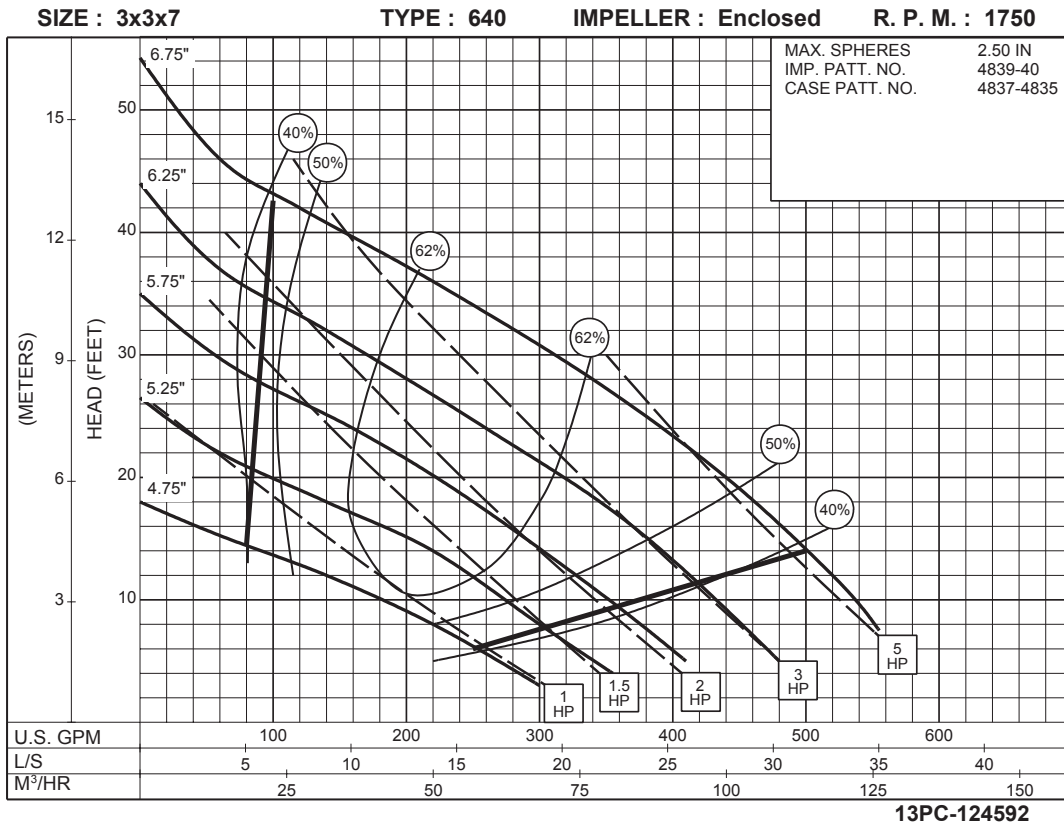
SIZE : 2x2x9 TYPE : 640 IMPELLER : Enclosed R. P. M. : 1150



**1150**  
RPM

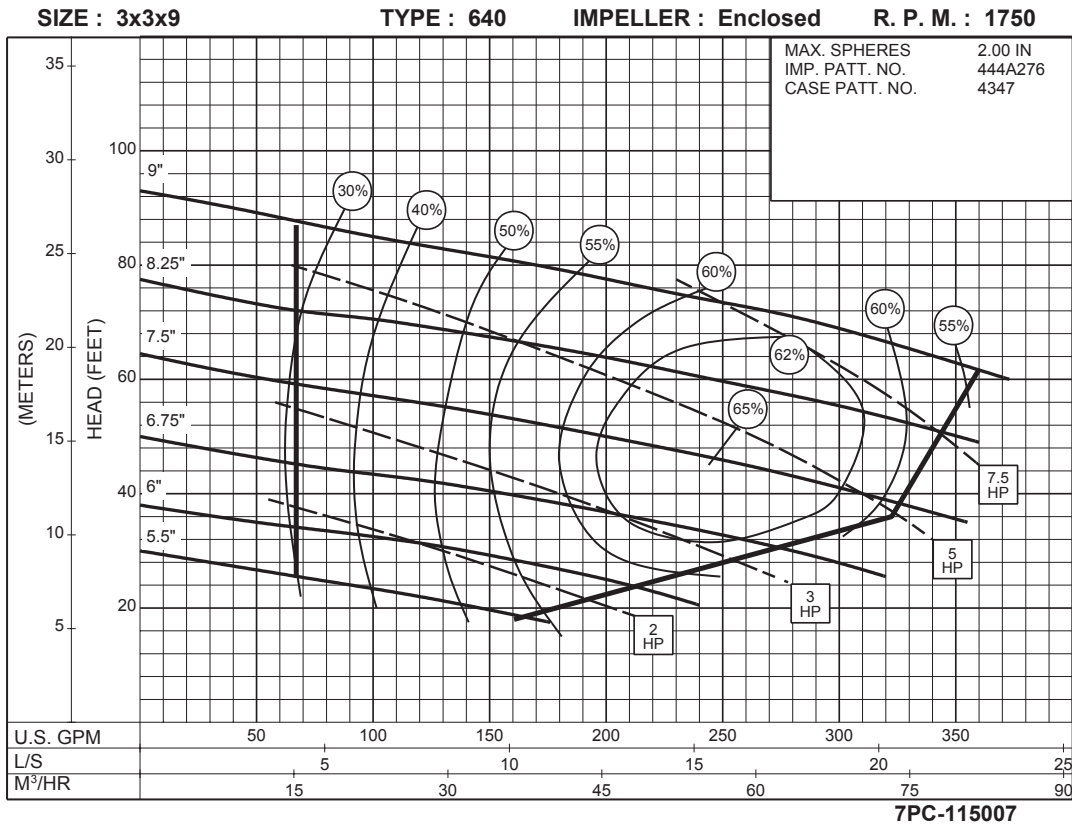
# 3 x 3 x 7 SERIES 640

## ENCLOSED IMPELLER

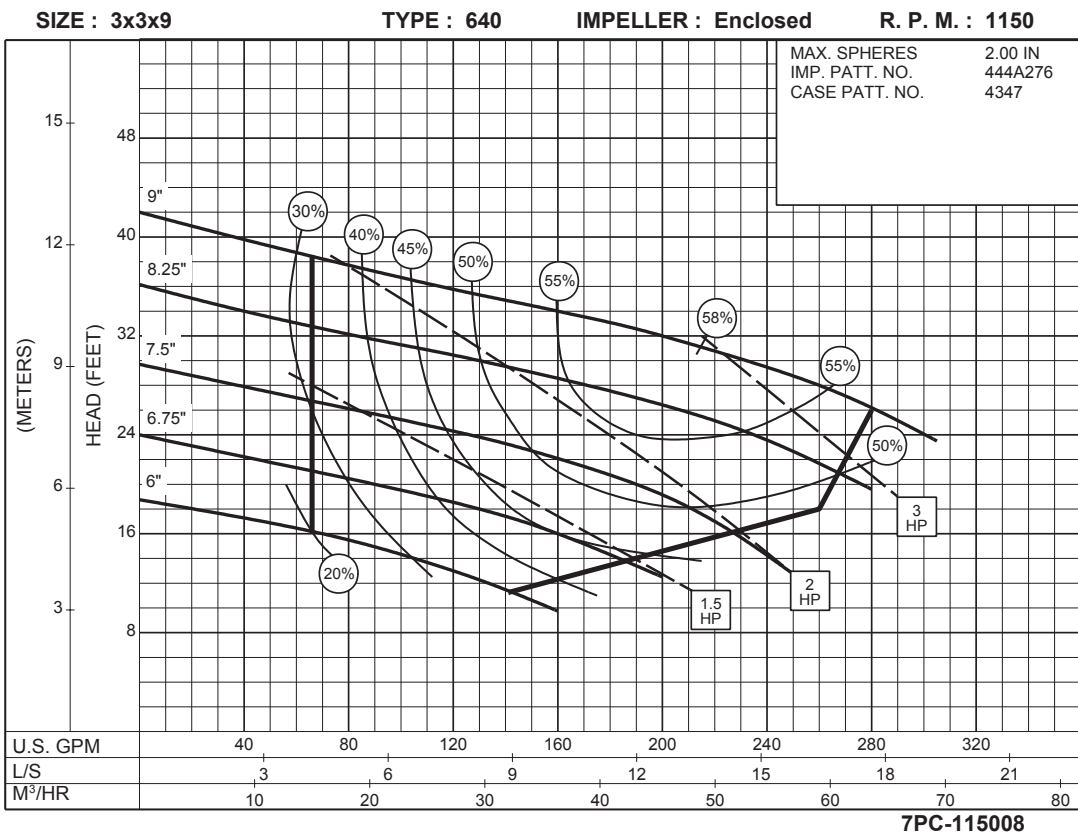


# 3 x 3 x 9 SERIES 640

SEMI-OPEN IMPELLER



1750  
RPM



1150  
RPM