



**PENTAIR FAIRBANKS NIJHUIS**

**MULTI STAGE SPLIT CASE PUMPS  
PERFORMANCE CURVE**

**ENGINEERING DATA  
GUIDE**

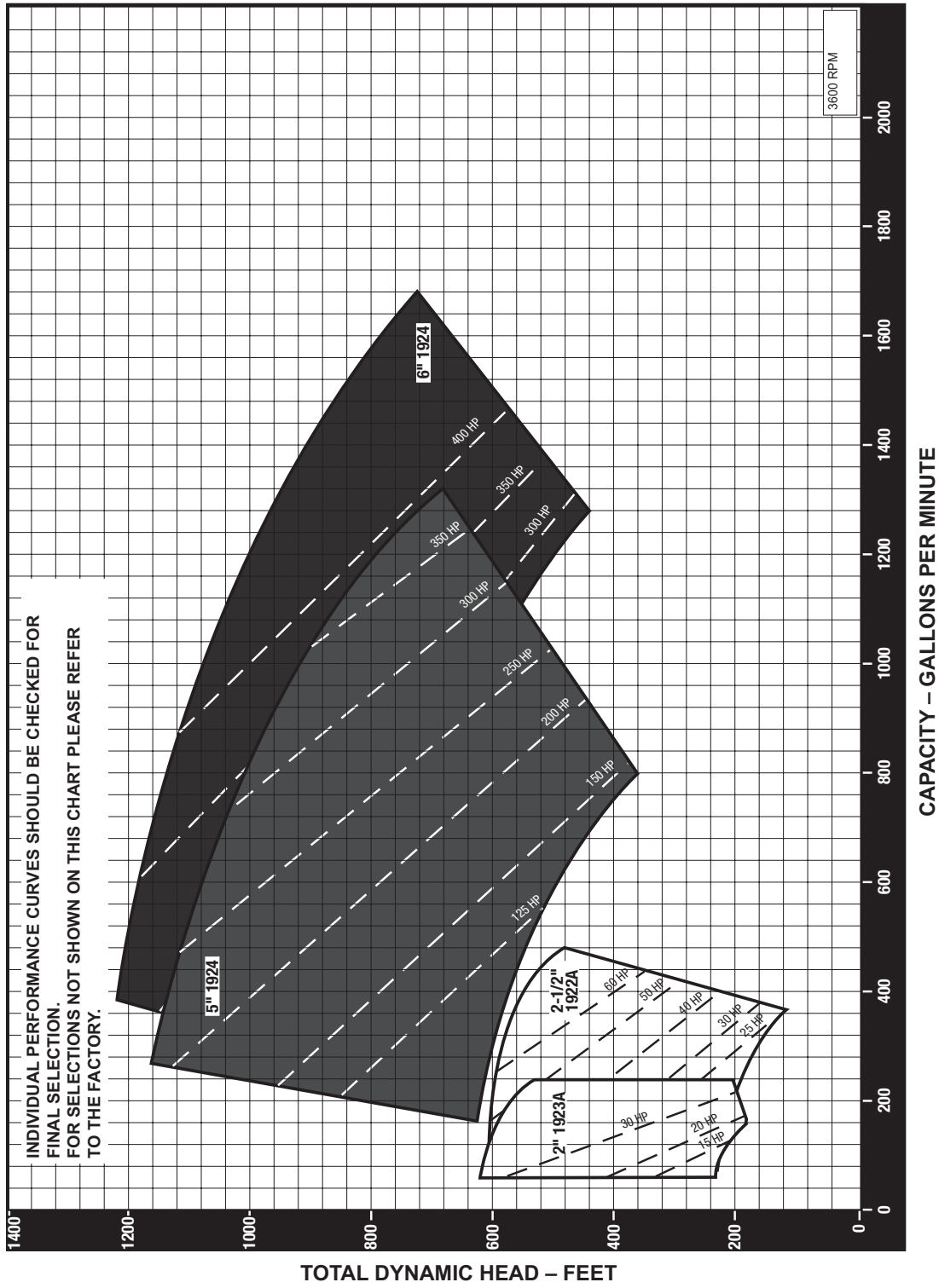
[pentair.com](http://pentair.com)

# TABLE OF CONTENTS

---

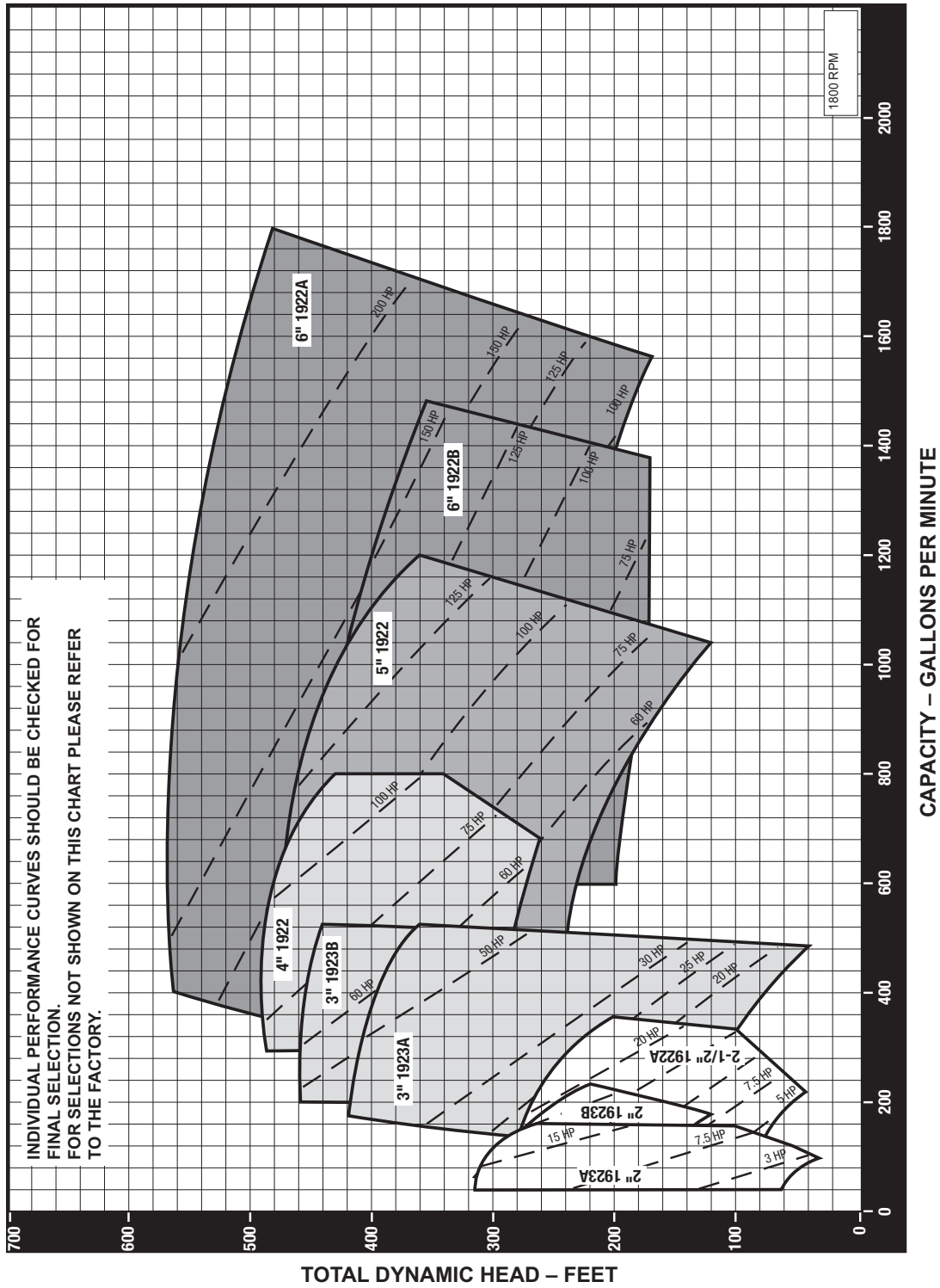
SECTION.....	PAGE
<b>60 HERTZ COVERAGE</b>	
1900 Series Coverage Chart 3600 RPM .....	3
1900 Series Coverage Chart 1800 RPM .....	4
<b>3550 RPM</b>	
5" 1924 (444R430/431) .....	7
6" 1924 (444R432/433) .....	7
<b>3500 RPM</b>	
2" 1923A (444A235/236) .....	8
2-1/2" 1922A (444A239/240) .....	8
<b>1750 RPM</b>	
2" 1923A (444A235/236) .....	9
2" 1923B (444A237/238) .....	9
2-1/2" 1922A (444A239/240) .....	10
3" 1923A (444A241/242) .....	10
3" 1923B (444A243/244) .....	11
4" 1922 (444A335/336) .....	11
5" 1922 (444A237/238) .....	12
6" 1922A (444A339/340) .....	12
6" 1922B (444A341/342) .....	13
<b>1150 RPM</b>	
2-1/2" 1922A (444A239/240) .....	13
3" 1923A (444A241/242) .....	14
4" 1922 (444A335/336) .....	14
6" 1922B (444A341/342) .....	15
<b>50 HERTZ COVERAGE</b>	
1900 Series Coverage Chart 3000 RPM .....	5
1900 Series Coverage Chart 1500 RPM .....	6
<b>2950 RPM</b>	
5" 1924 (444R430/431) .....	16
6" 1924 (444R432/433) .....	16
<b>2880 RPM</b>	
2" 1923A (444A235/236) .....	17
2-1/2" 1922A (444A239/240) .....	17
<b>1475 RPM</b>	
4" 1922 (444A335/336) .....	18
6" 1922A (444A339/340) .....	18
6" 1922B (444A341/342) .....	19
<b>1440 RPM</b>	
2" 1923A (444A235/236) .....	19
2" 1923B (444A237/238) .....	20
2-1/2" 1922A (444A239/240) .....	20
3" 1923A (444A241/242) .....	21
3" 1923B (3955/3956) .....	21
5" 1922 (444A337/338) .....	22
<b>960 RPM</b>	
2-1/2" 1922A (444A239/240) .....	22
3" 1923A (444A241/242) .....	23
4" 1922 (444A335/336) .....	23
6" 1922B (444A341/342) .....	24



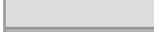

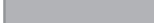

1900 SERIES MULTI-STAGE SPLIT CASE PUMPS



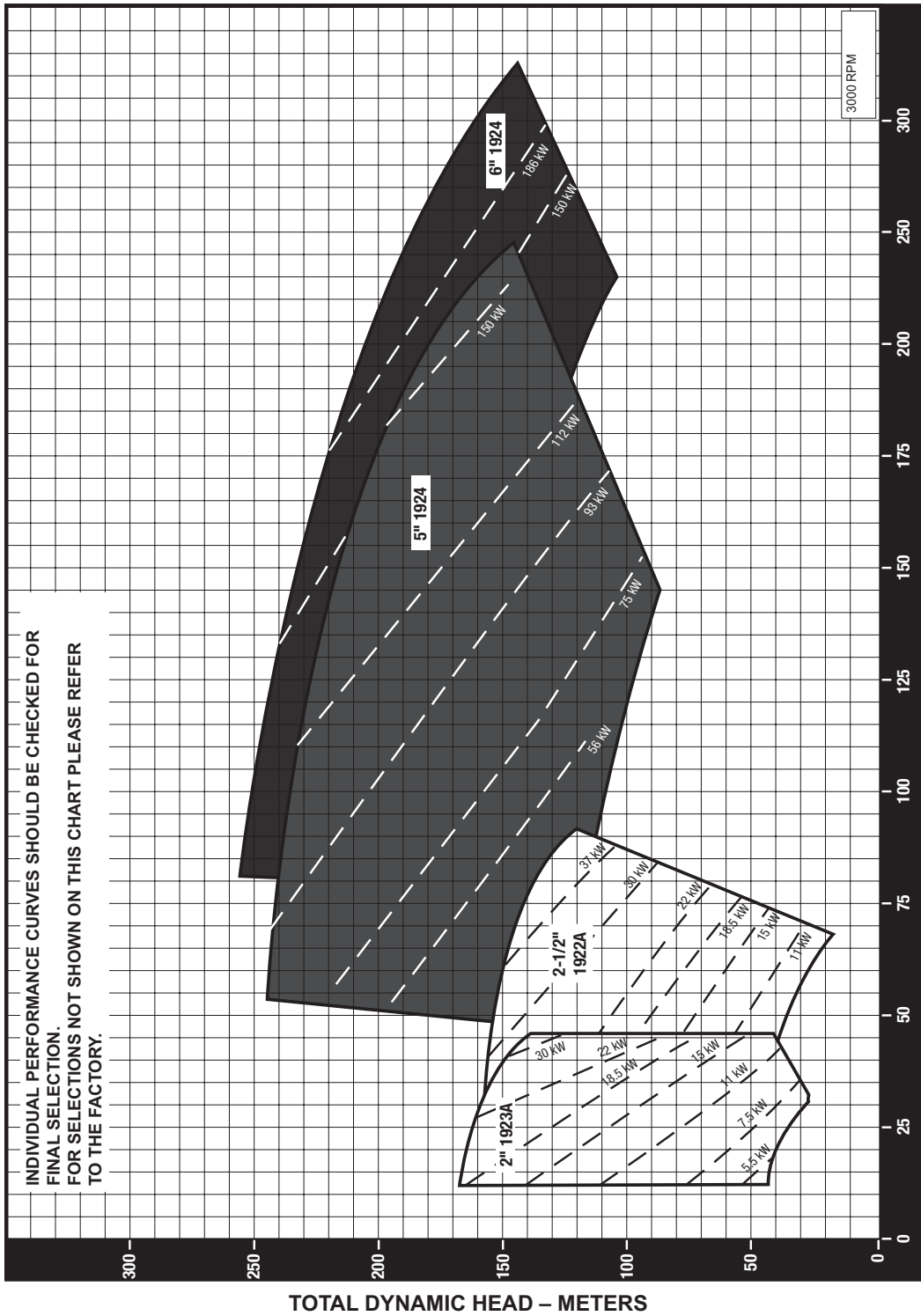
	Power Frame No. 2		Power Frame No. 4A
	Power Frame No. 3		Power Frame No. 5
	Power Frame No. 4		Power Frame No. 5A

1900 SERIES MULTI-STAGE SPLIT CASE PUMPS



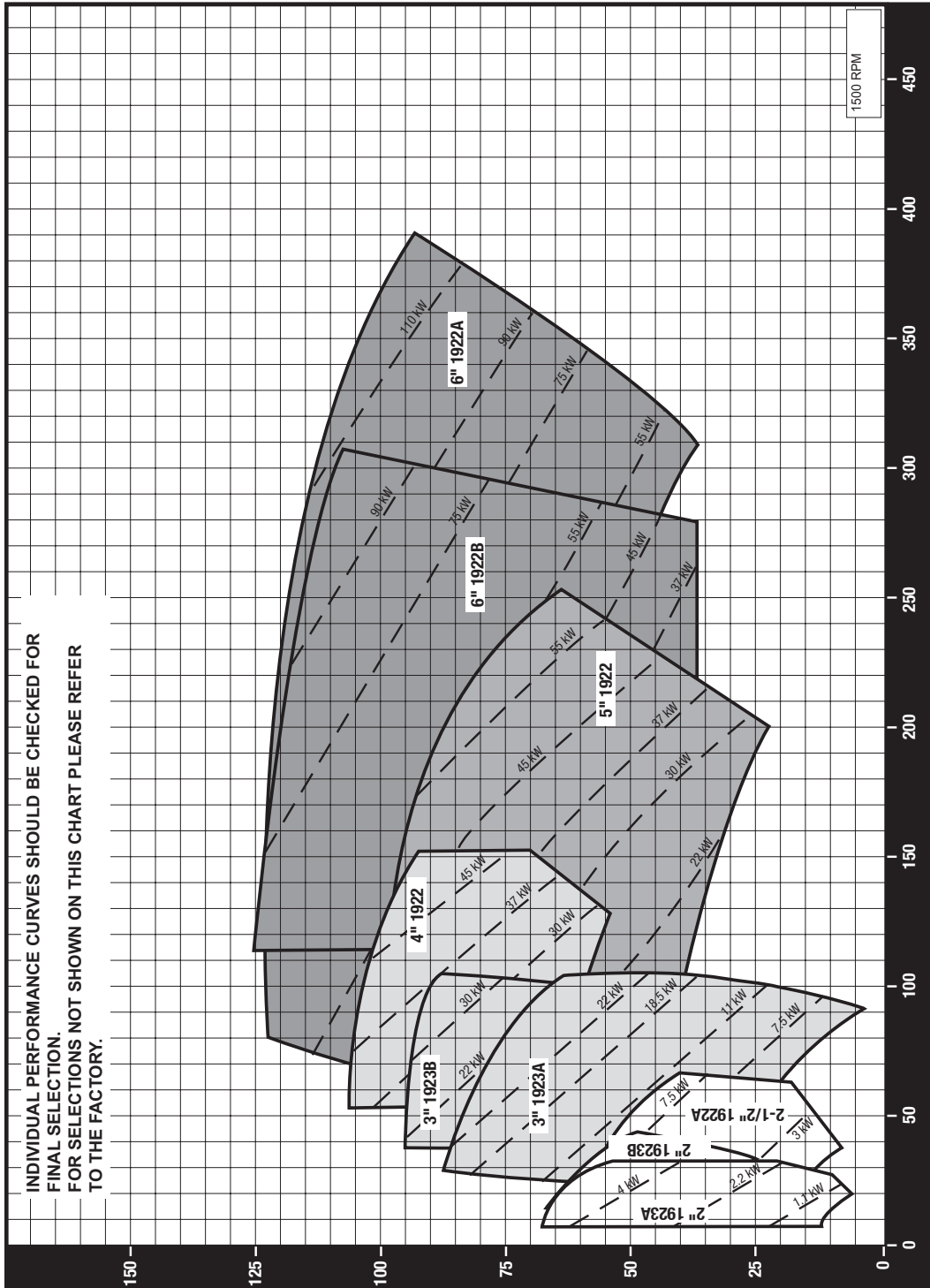
	Power Frame No. 2		Power Frame No. 4A
	Power Frame No. 3		Power Frame No. 5
	Power Frame No. 4		Power Frame No. 5A

1900 SERIES MULTI-STAGE SPLIT CASE PUMPS



	Power Frame No. 2		Power Frame No. 4A
	Power Frame No. 3		Power Frame No. 5
	Power Frame No. 4		Power Frame No. 5A

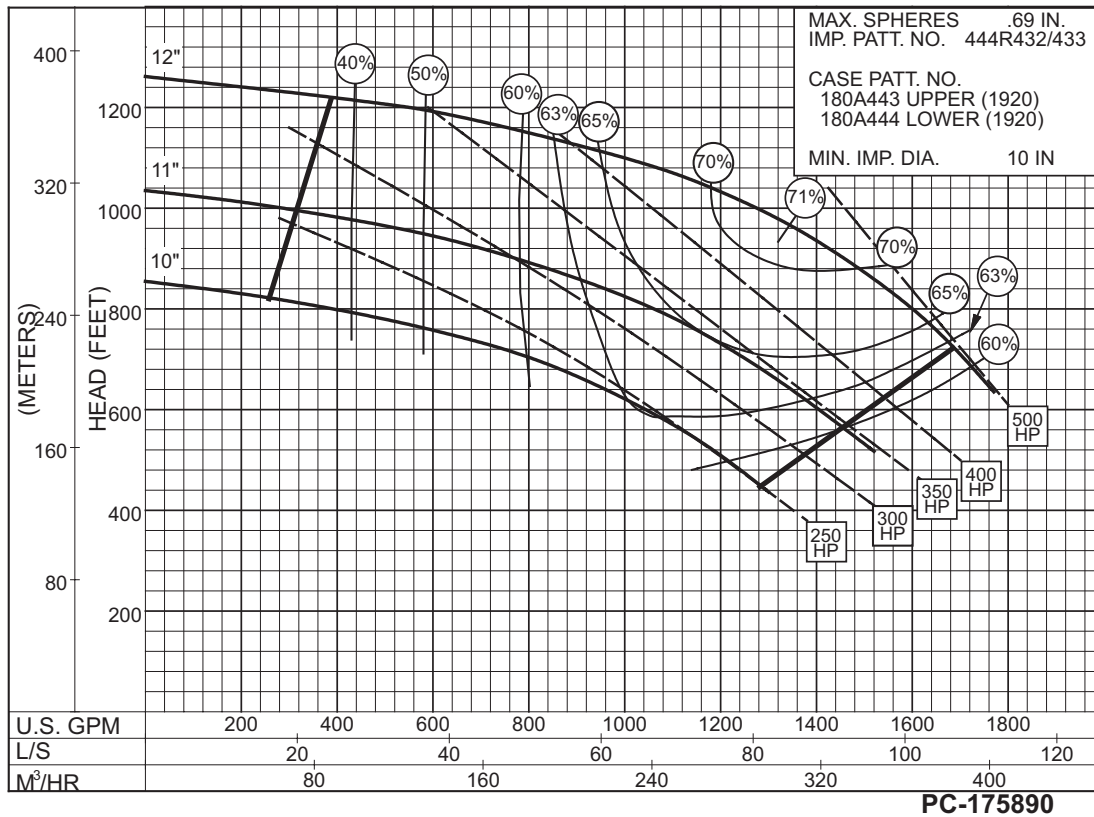
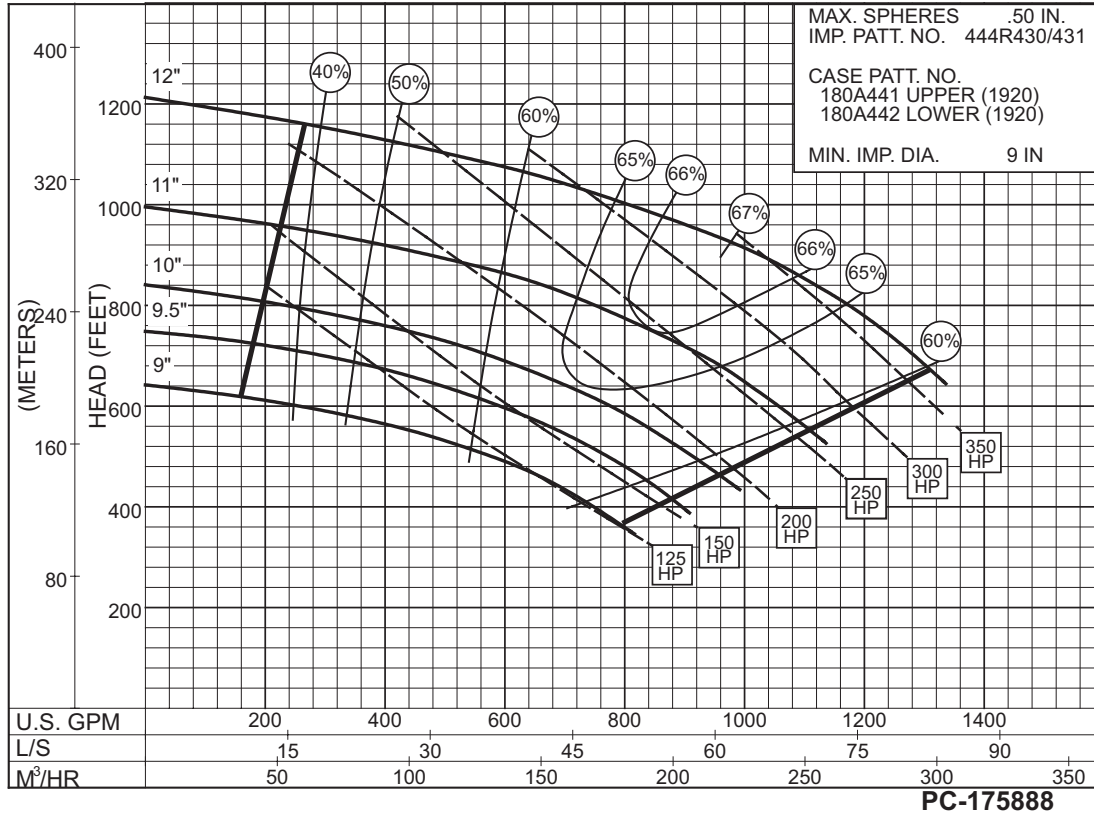
1900 SERIES MULTI-STAGE SPLIT CASE PUMPS



INDIVIDUAL PERFORMANCE CURVES SHOULD BE CHECKED FOR FINAL SELECTION. FOR SELECTIONS NOT SHOWN ON THIS CHART PLEASE REFER TO THE FACTORY.

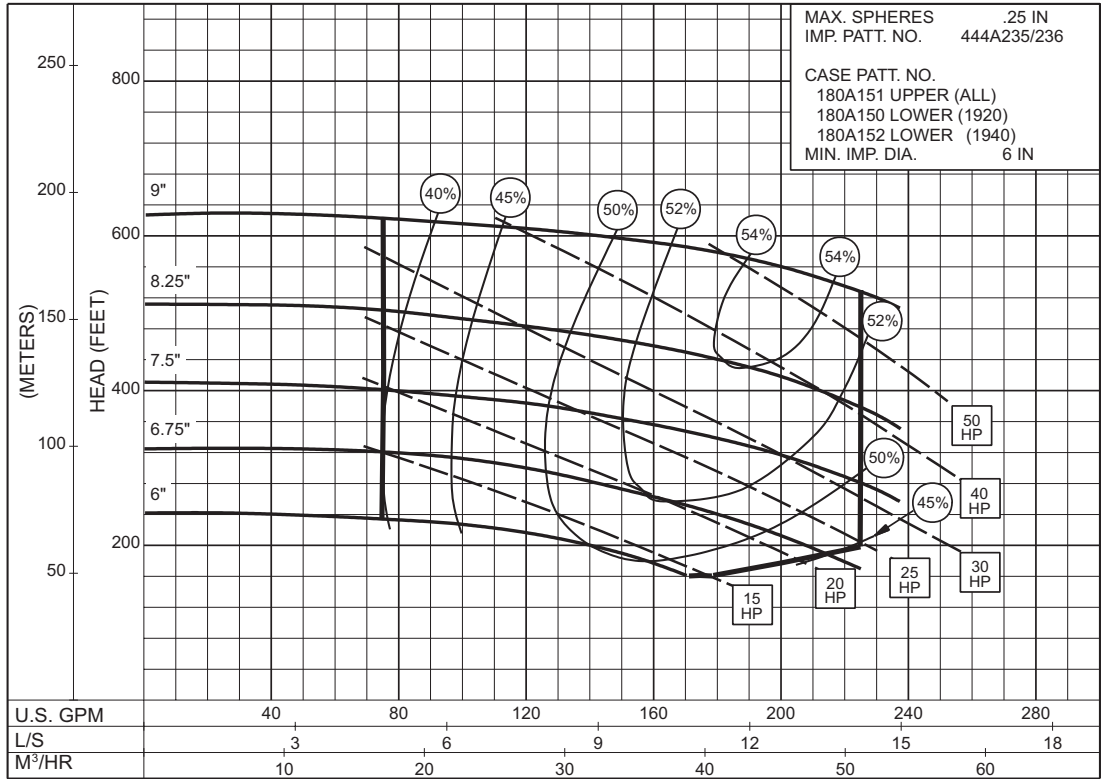
	Power Frame No. 2		Power Frame No. 4A
	Power Frame No. 3		Power Frame No. 5
	Power Frame No. 4		Power Frame No. 5A

**1900 SERIES MULTI-STAGE SPLIT CASE PUMPS**



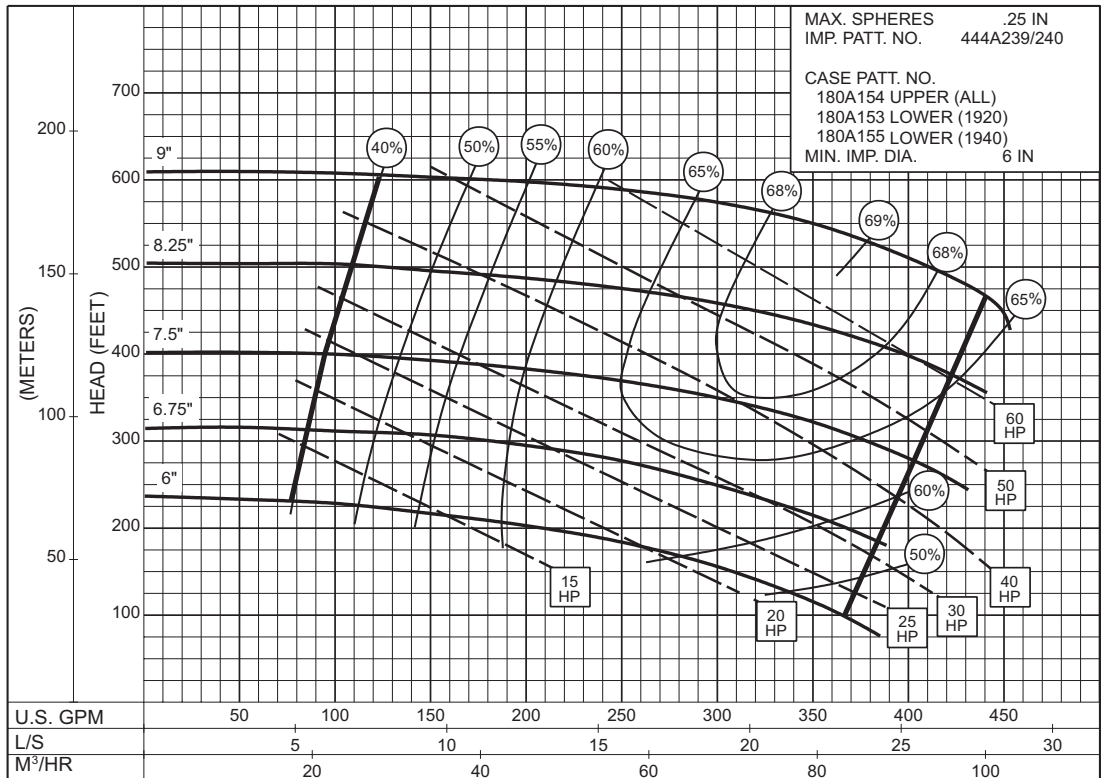
**1900 SERIES MULTI-STAGE SPLIT CASE PUMPS**

**2"**  
**1923A**  
**3500 RPM**  
 Impeller  
 444A235/236



**1PC-115893**

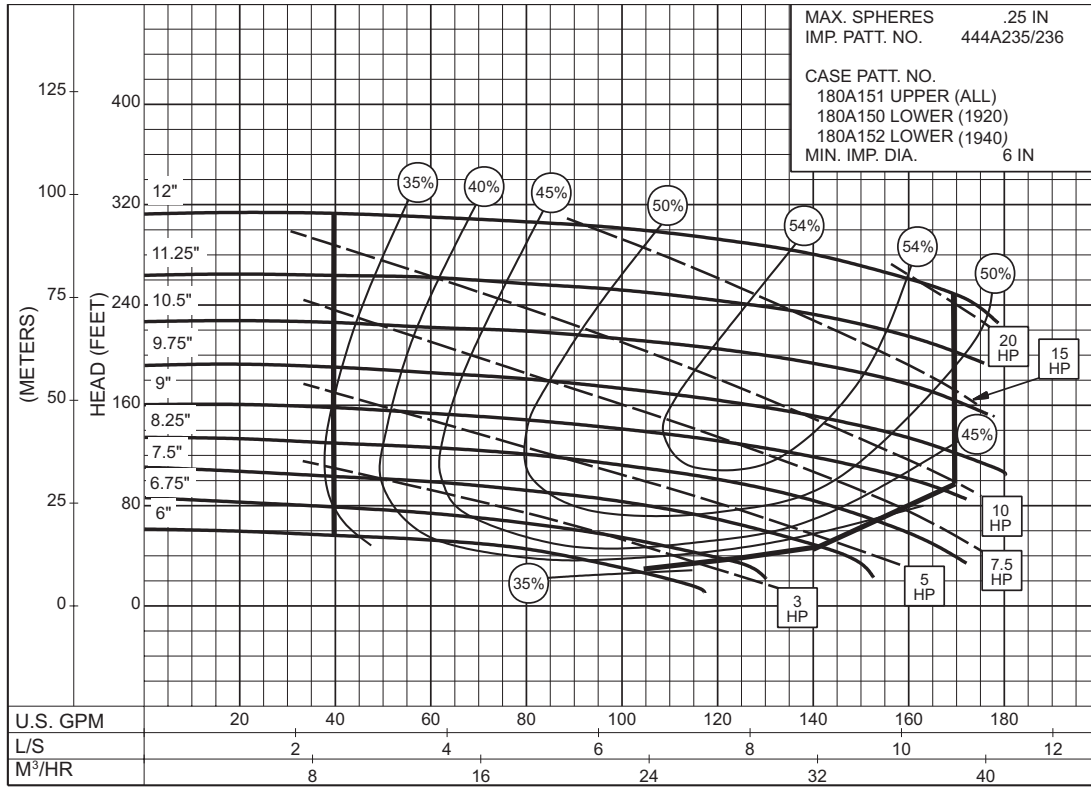
**2-1/2"**  
**1922A**  
**3500 RPM**  
 Impeller  
 444A239/240



**1PC-115896**



**1900 SERIES MULTI-STAGE SPLIT CASE PUMPS**



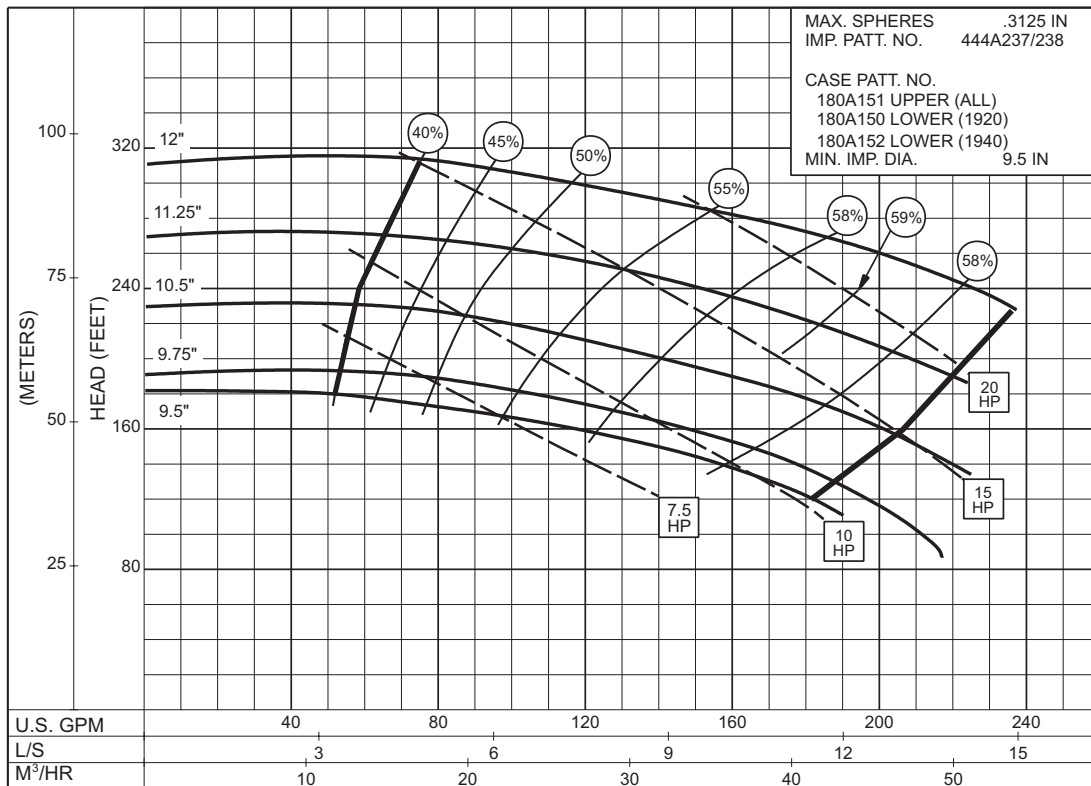
**1PC-115894**

**2"**

**1923A**

**1750 RPM**

Impeller  
 444A235/236



**1PC-115895**

**2"**

**1923B**

**1750 RPM**

Impeller  
 444A237/238

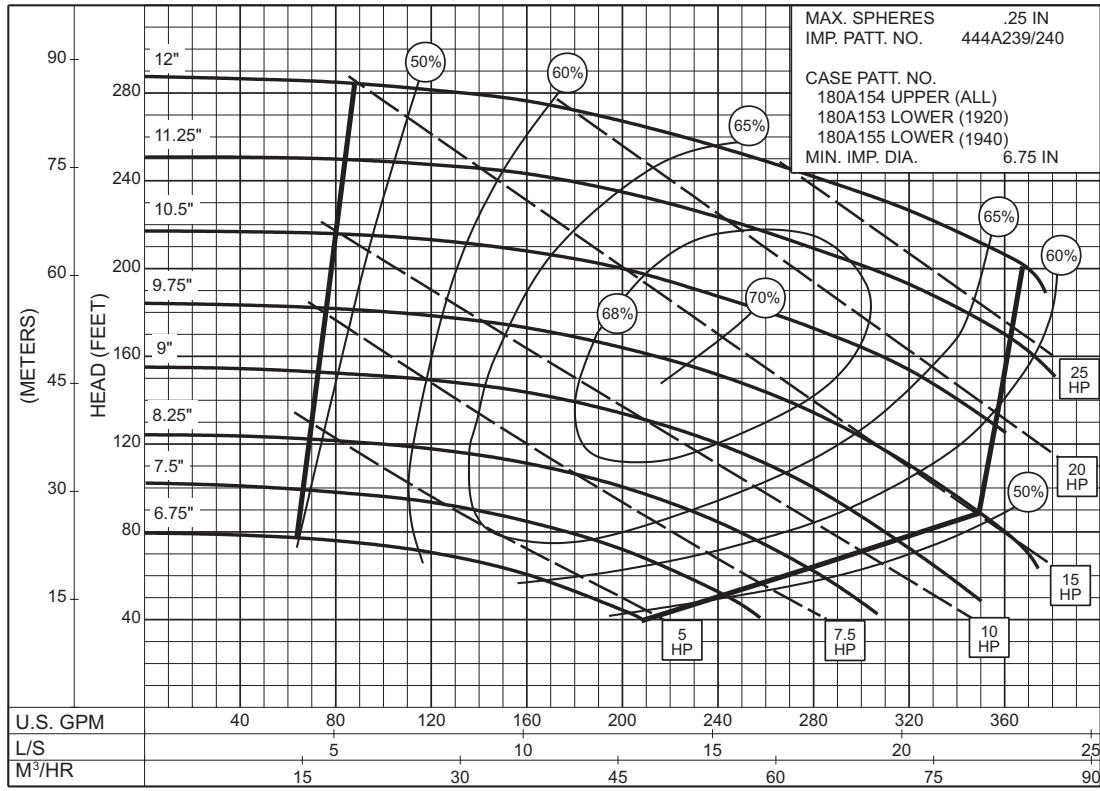
**1900 SERIES MULTI-STAGE SPLIT CASE PUMPS**

**2-1/2"**

**1922A**

**1750 RPM**

Impeller  
444A239/240



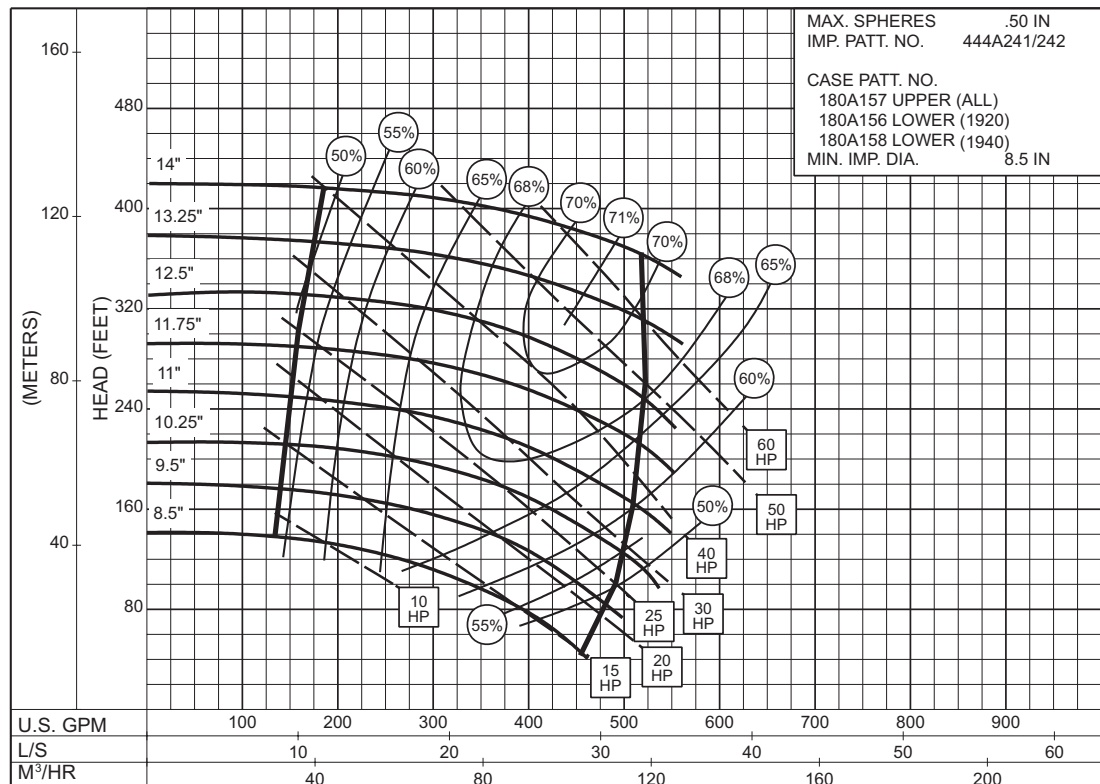
**1PC-115897**

**3"**

**1923A**

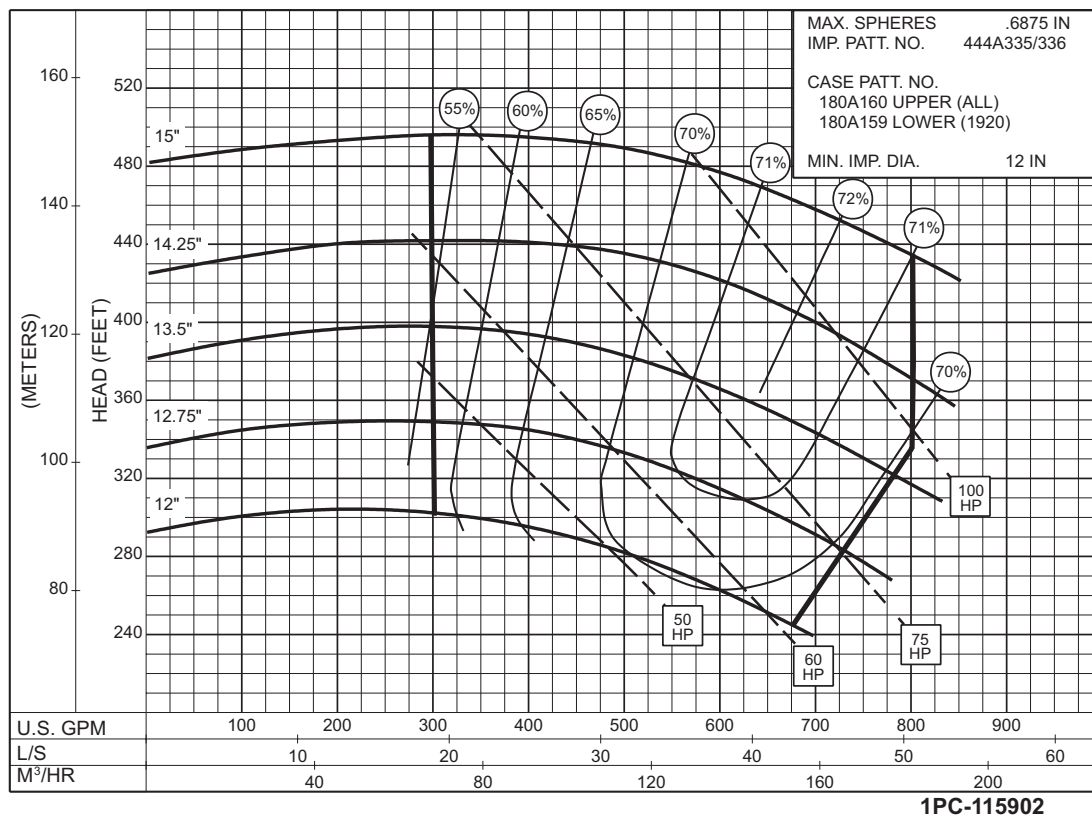
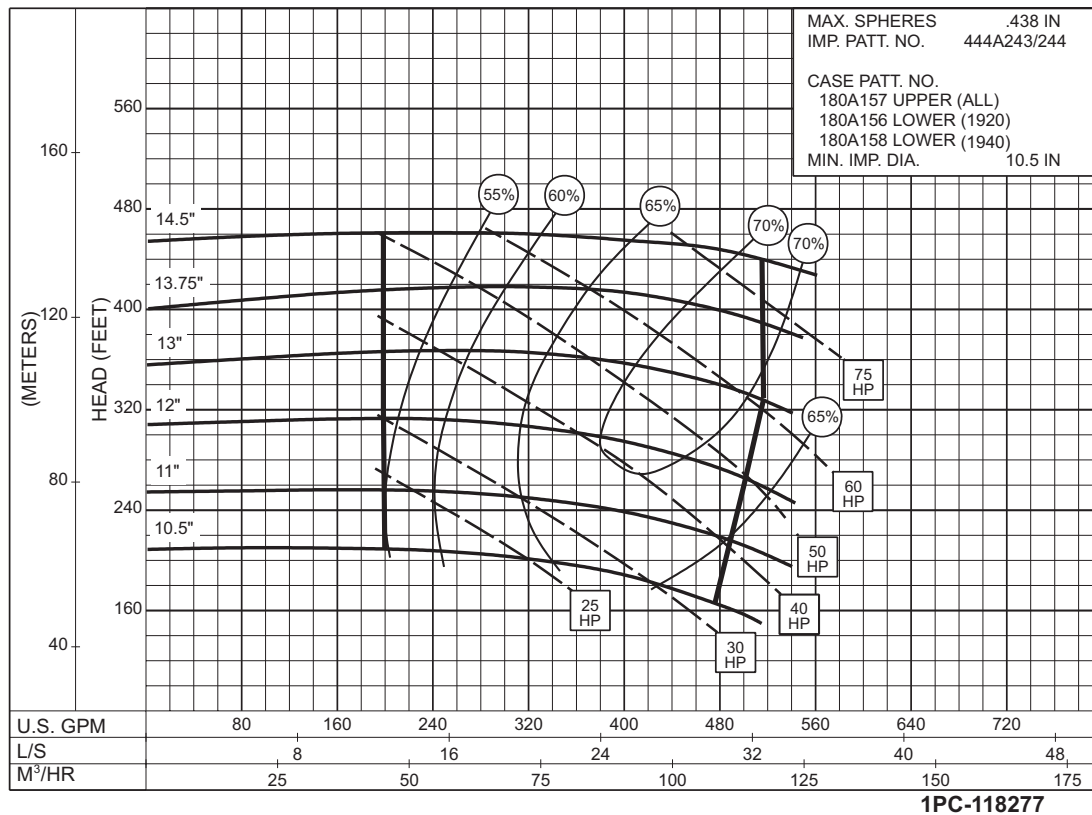
**1750 RPM**

Impeller  
444A241/242



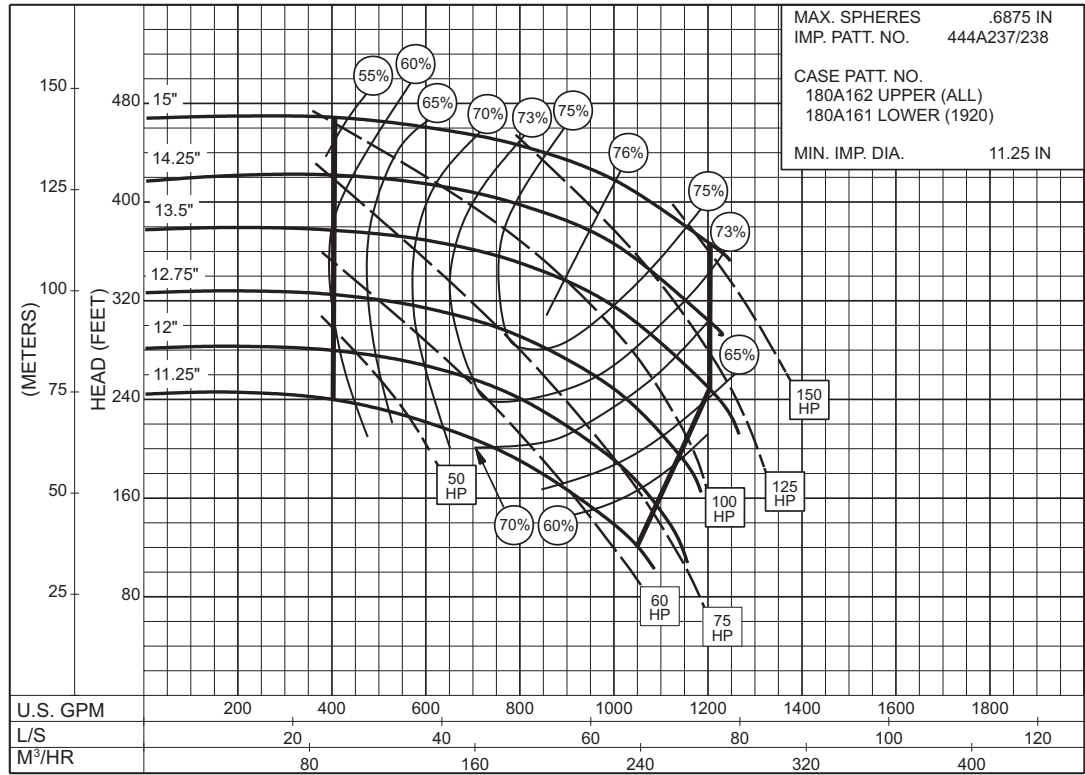
**1PC-115899**

**1900 SERIES MULTI-STAGE SPLIT CASE PUMPS**



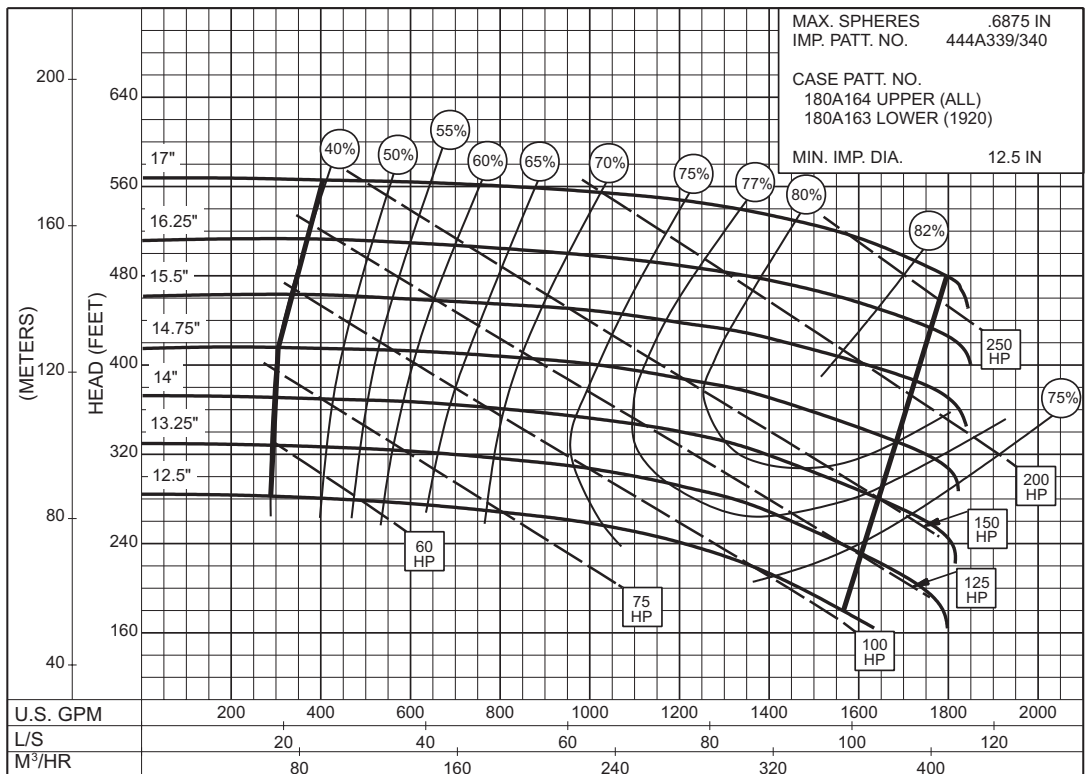
**1900 SERIES MULTI-STAGE SPLIT CASE PUMPS**

**5"**  
**1922**  
**1750 RPM**  
 Impeller  
 444A237/238



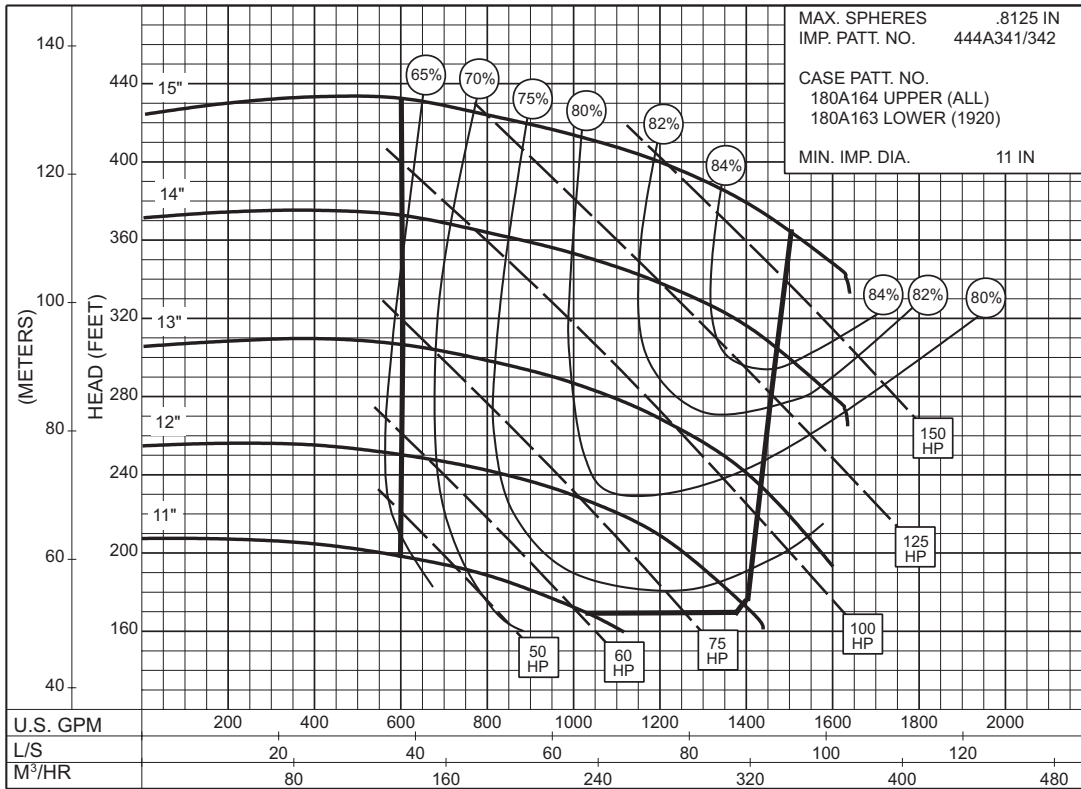
**1PC-115904**

**6"**  
**1922A**  
**1750 RPM**  
 Impeller  
 444A339/340



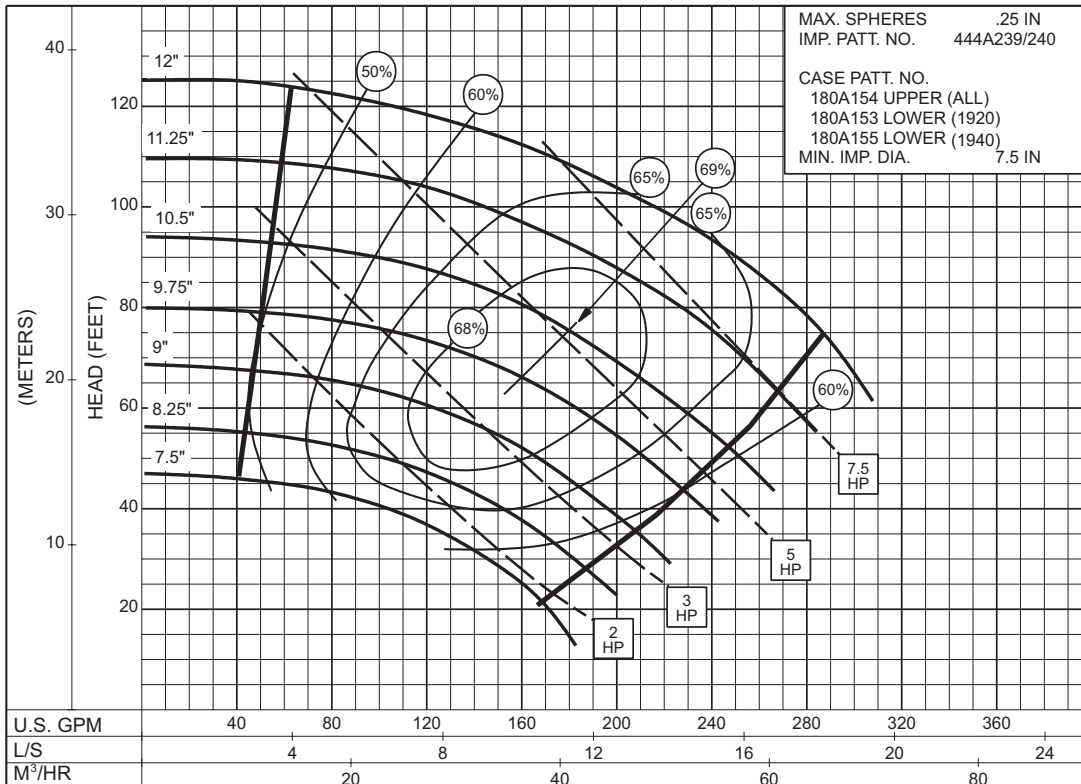
**1PC-115905**

**1900 SERIES MULTI-STAGE SPLIT CASE PUMPS**



**1PC-115906**

**6"**  
**1922B**  
**1750 RPM**  
 Impeller  
 444A341/342

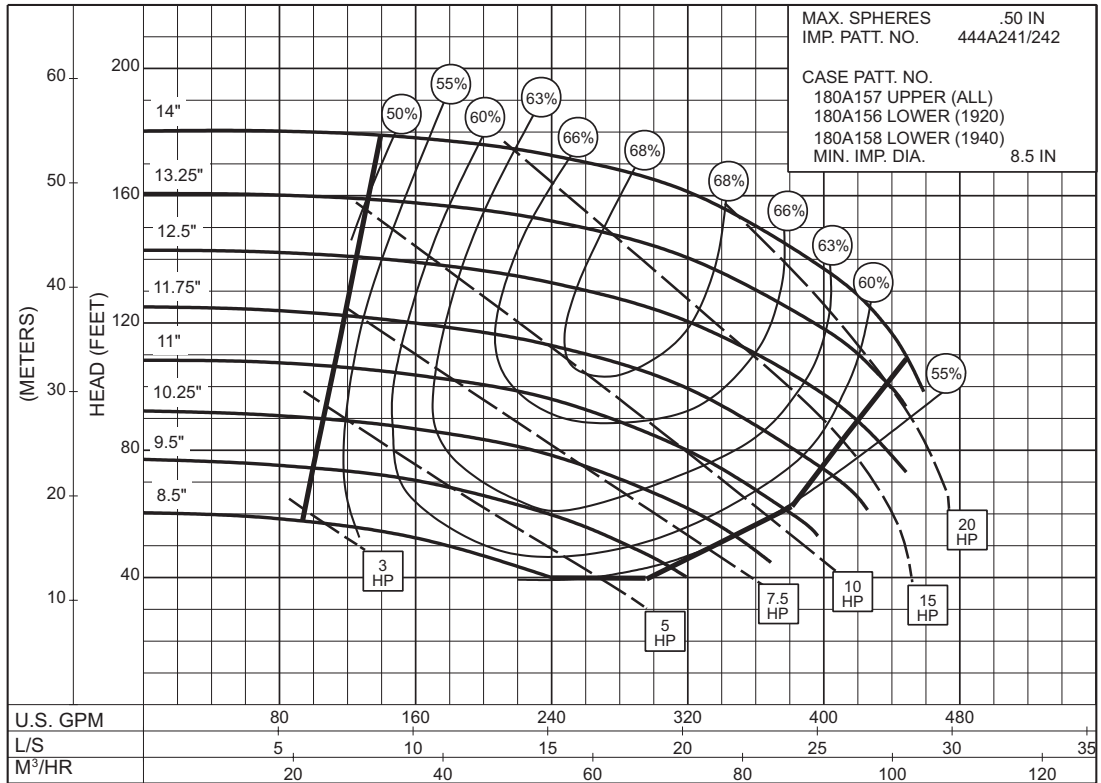


**1PC-115898**

**2-1/2"**  
**1922A**  
**1150 RPM**  
 Impeller  
 444A239/240

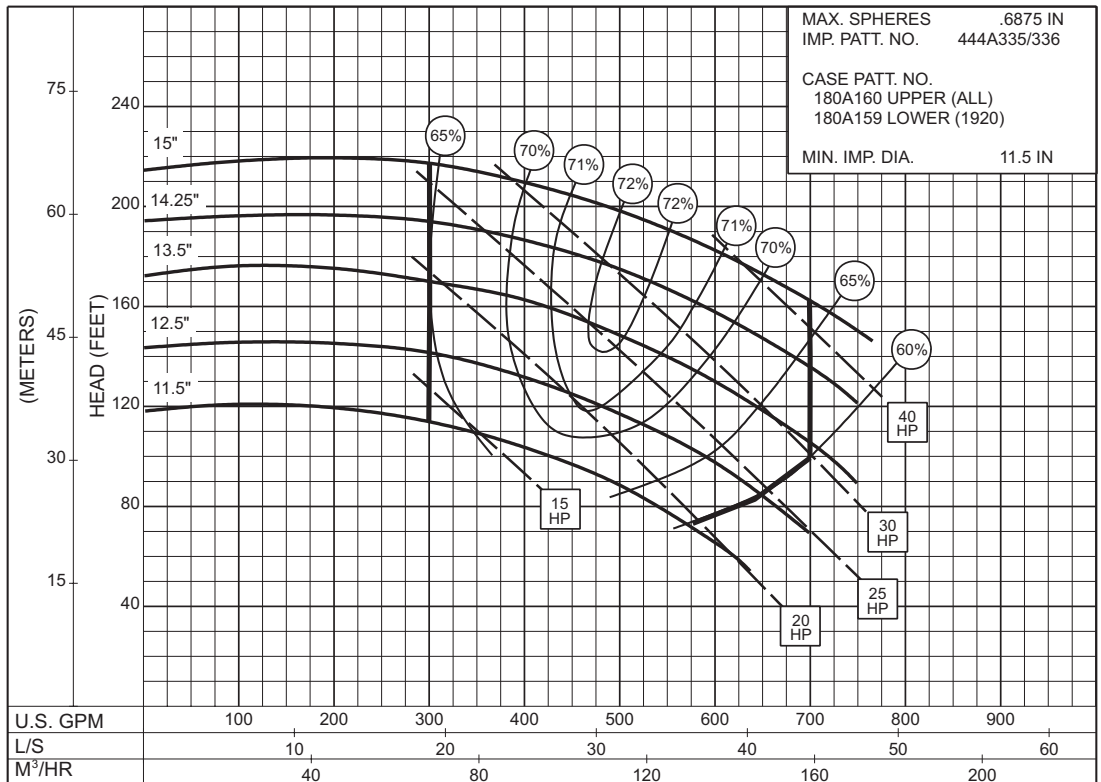
**1900 SERIES MULTI-STAGE SPLIT CASE PUMPS**

**3"**  
**1923A**  
**1150 RPM**  
 Impeller  
 444A241/242



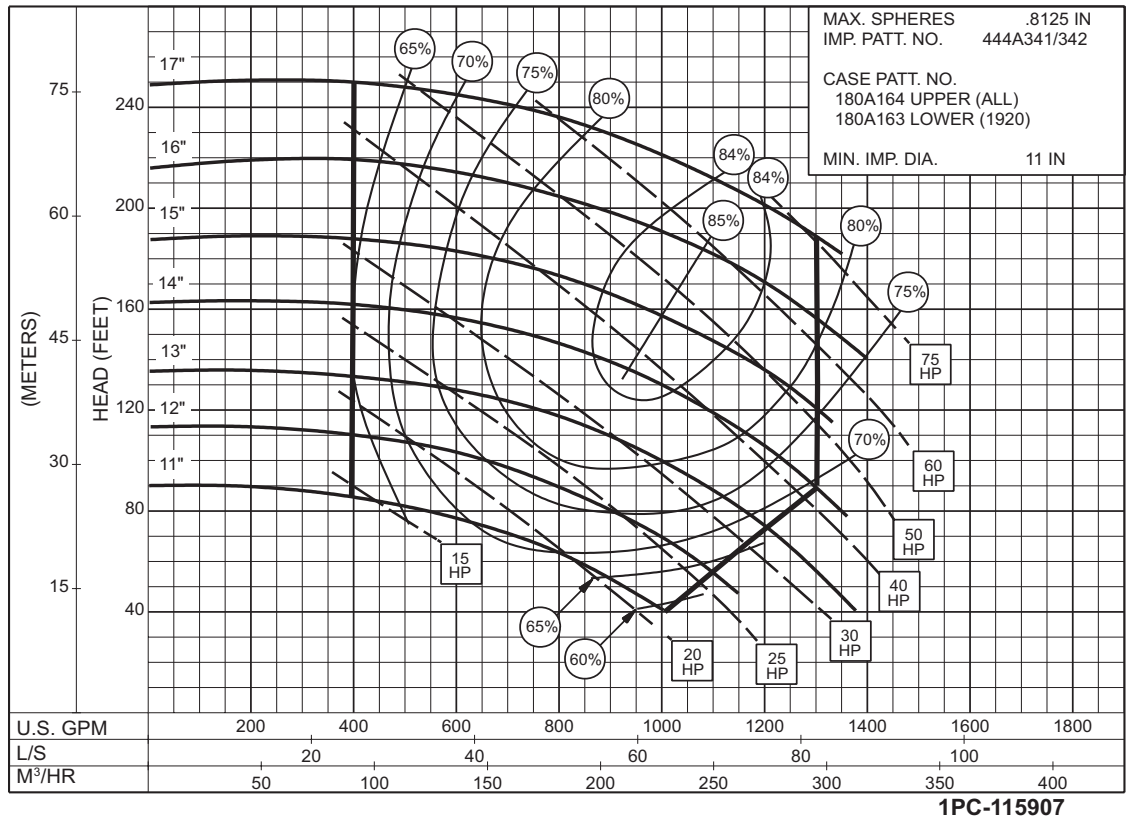
**1PC-115900**

**4"**  
**1922**  
**1150 RPM**  
 Impeller  
 444A335/336



**1PC-115903**

**1900 SERIES MULTI-STAGE SPLIT CASE PUMPS**



**6"**

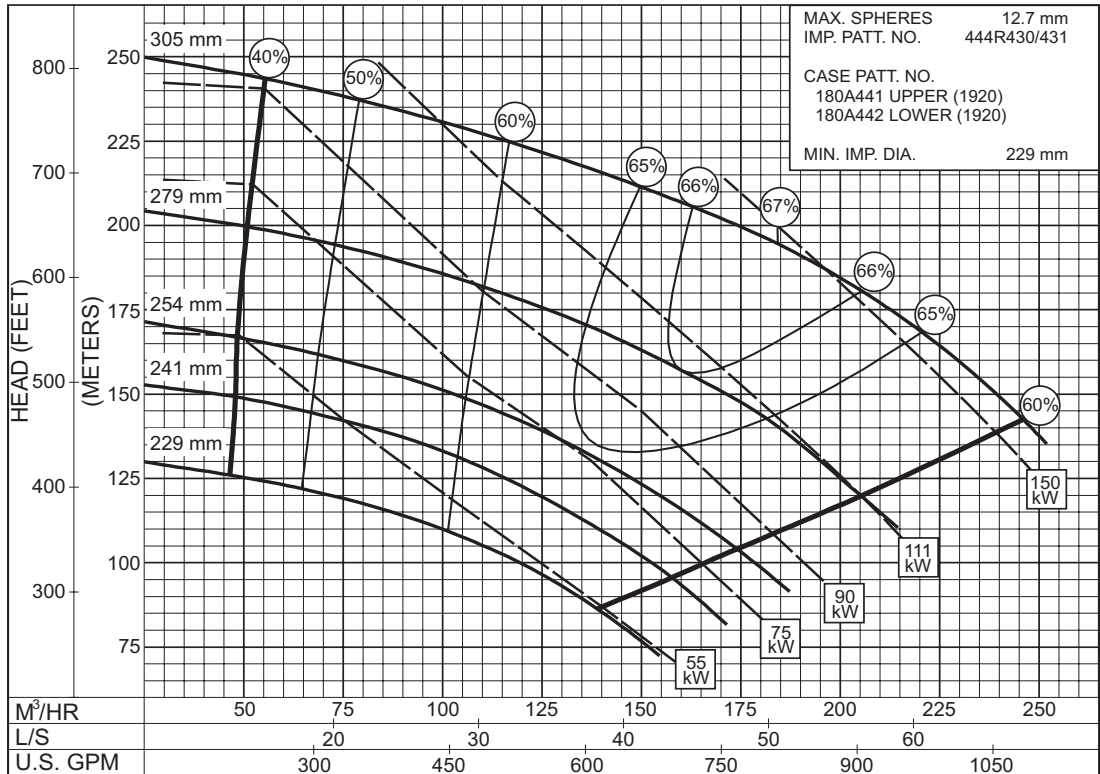
**1922B**

**1150 RPM**

Impeller  
 444A341/342

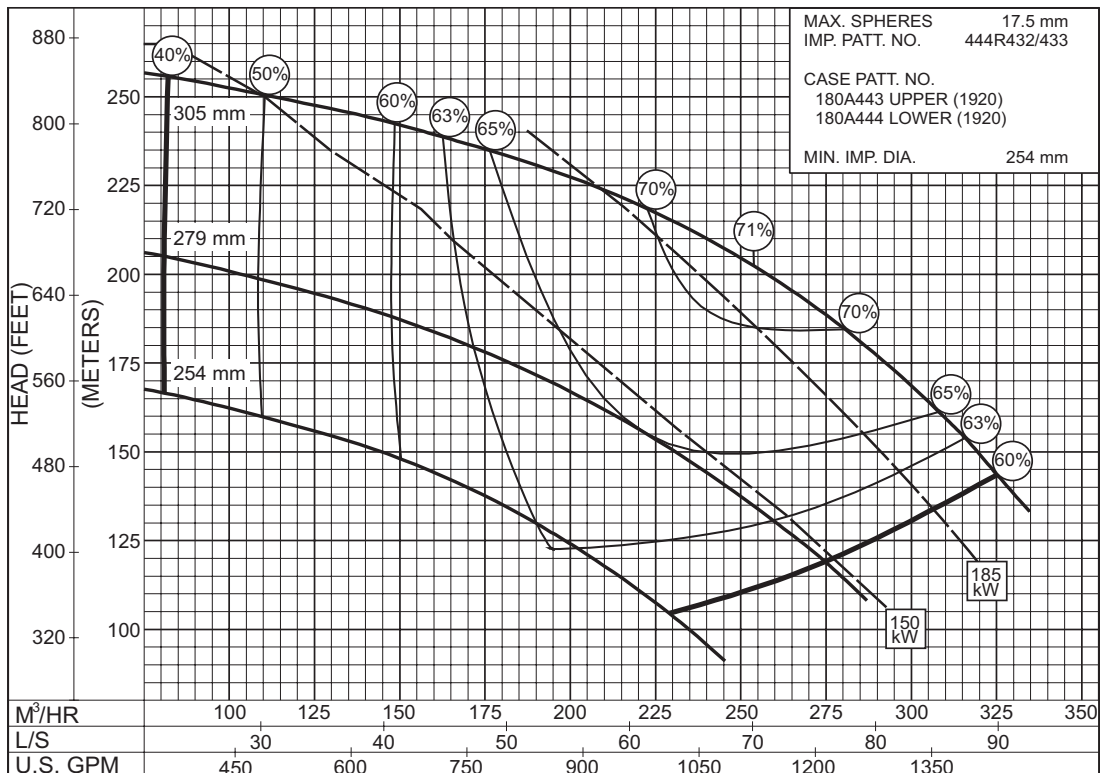
**1900 SERIES MULTI-STAGE SPLIT CASE PUMPS**

**5"**  
**1924**  
**2950 RPM**  
Impeller  
444R430/431



**PC-175888**

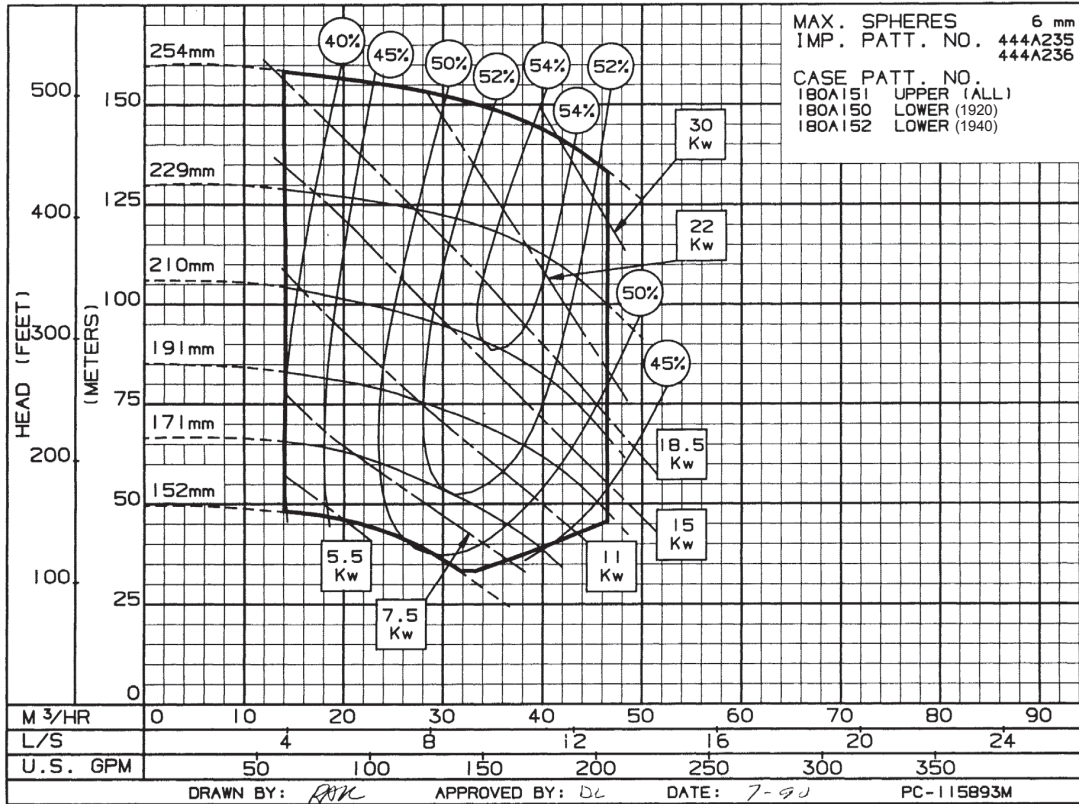
**6"**  
**1924**  
**2950 RPM**  
Impeller  
444R432/433



**PC-175890**



**1900 SERIES MULTI-STAGE SPLIT CASE PUMPS**

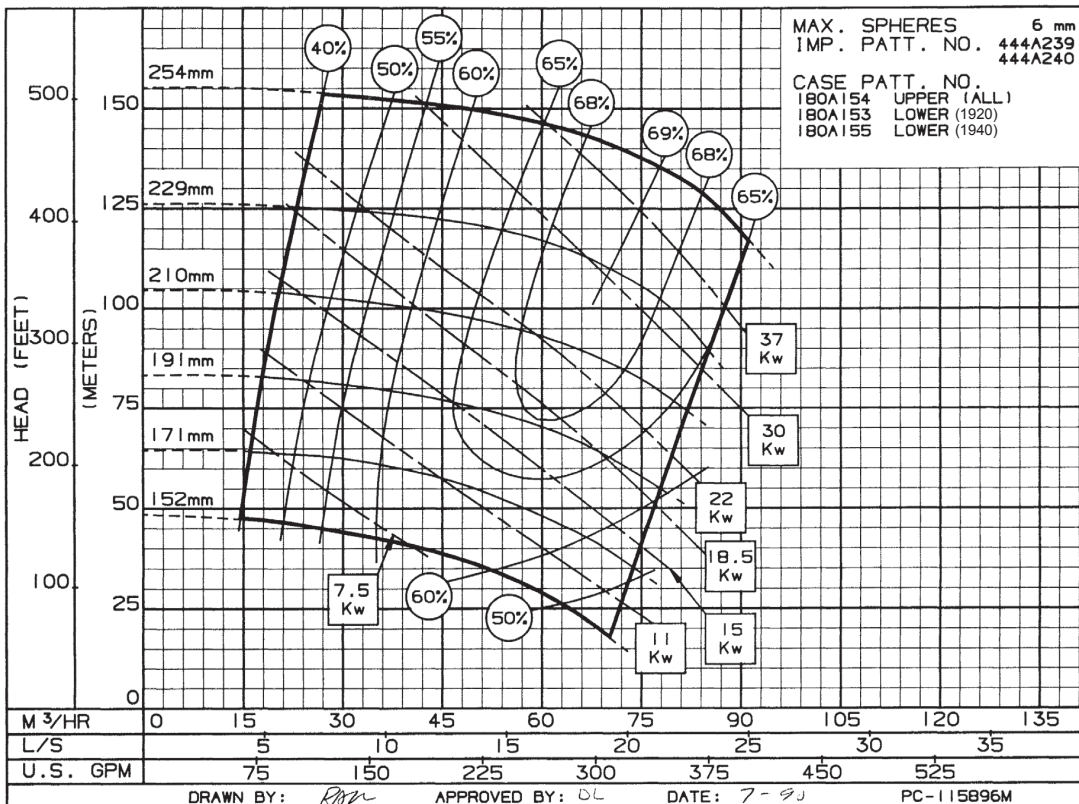


**2"**

**1923A**

**2880 RPM**

Impeller  
444A235/236



**2-1/2"**

**1922A**

**2880 RPM**

Impeller  
444A239/240

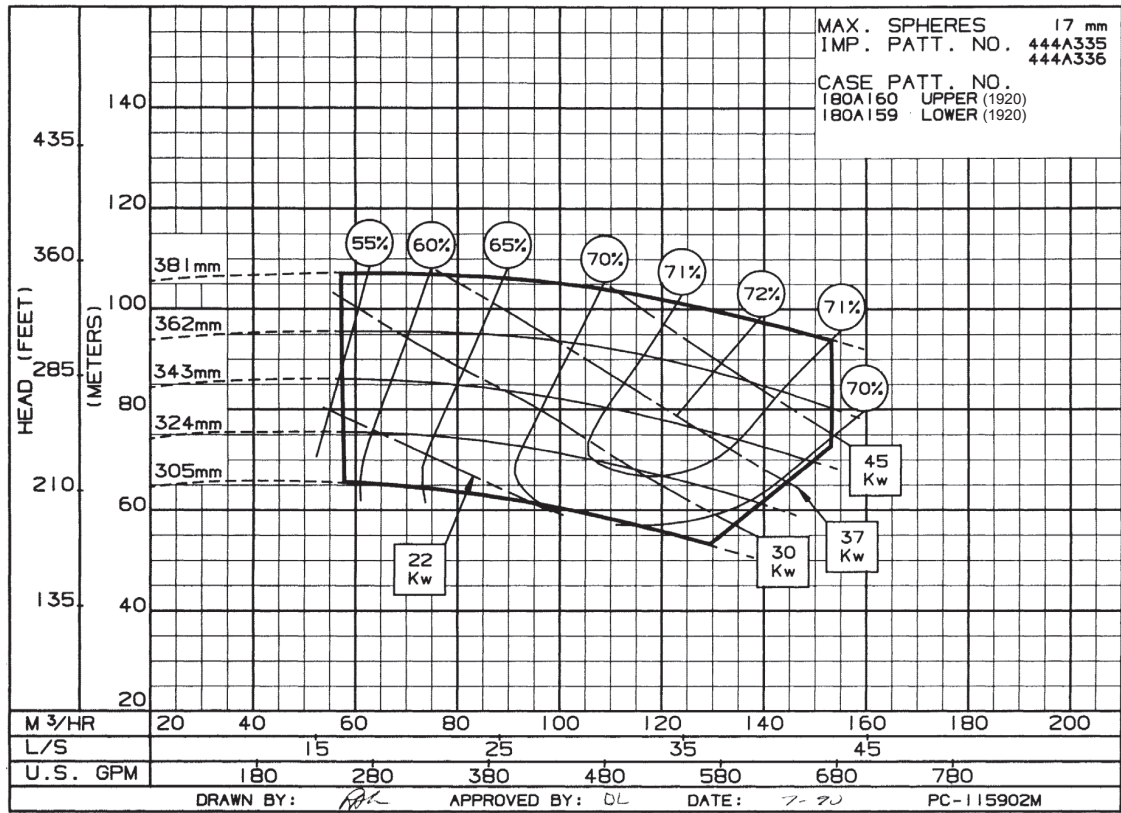
## 1900 SERIES MULTI-STAGE SPLIT CASE PUMPS

4"

1922

1475 RPM

Impeller  
444A335/336

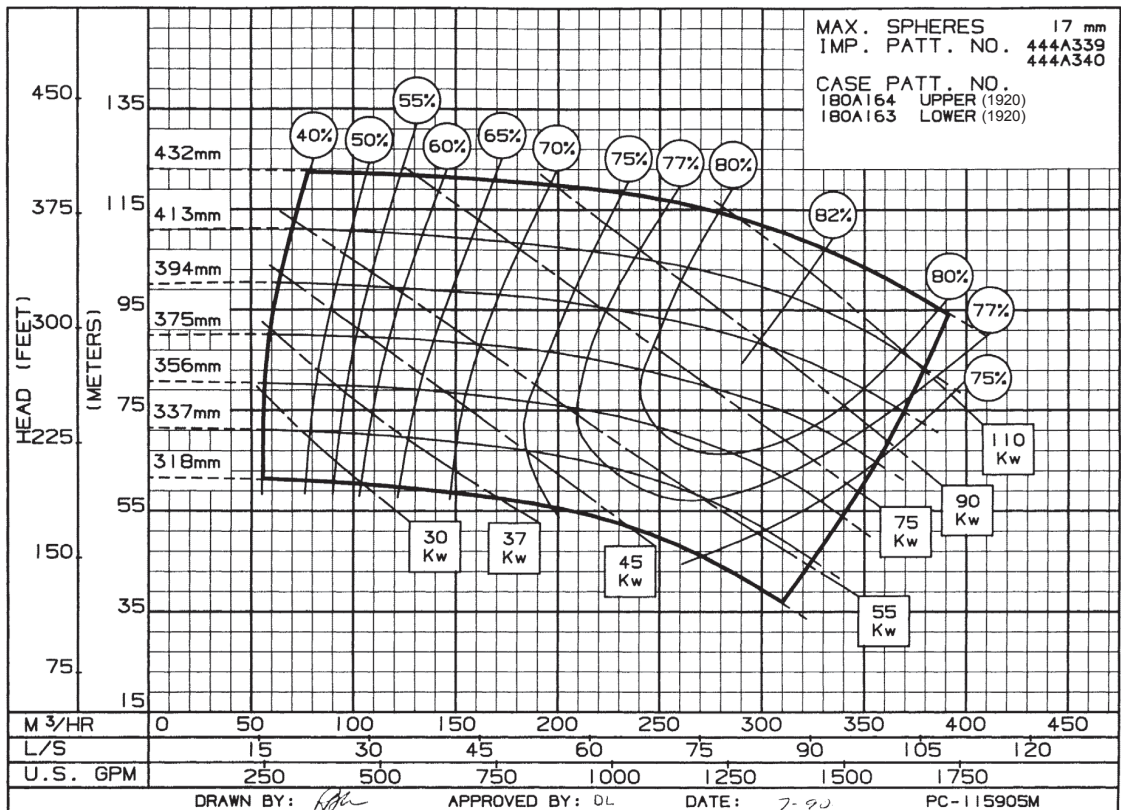


6"

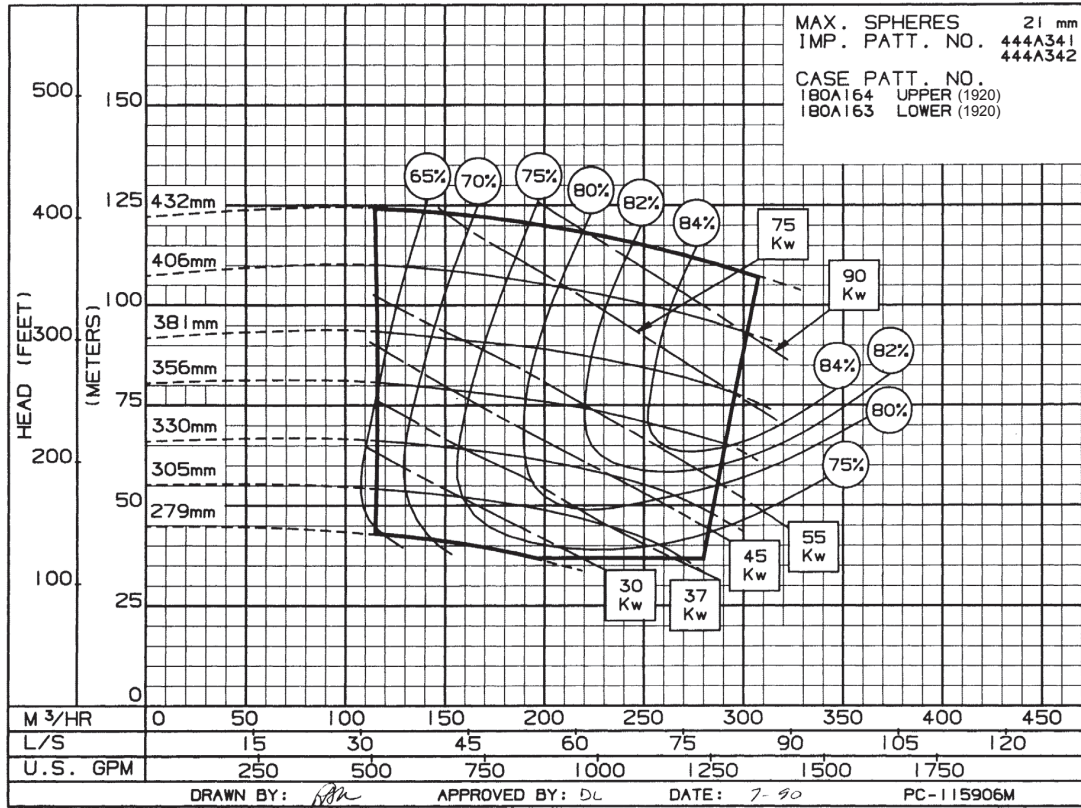
1922A

1475 RPM

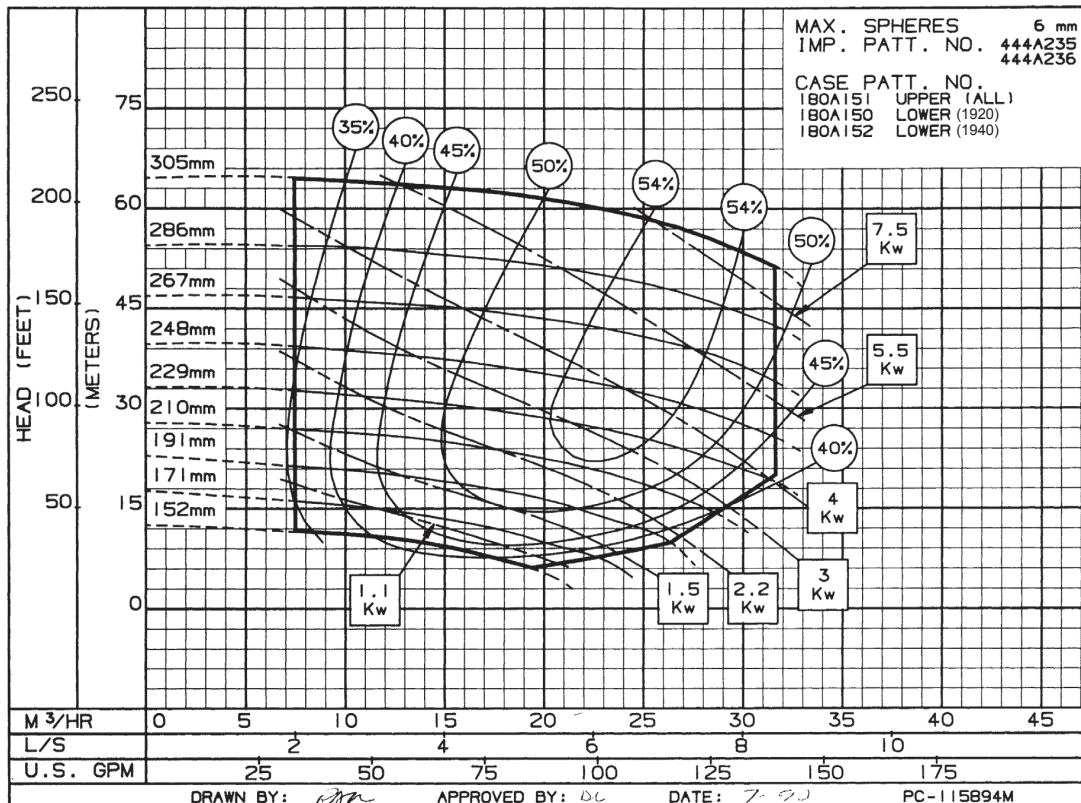
Impeller  
444A339/340



**1900 SERIES MULTI-STAGE SPLIT CASE PUMPS**



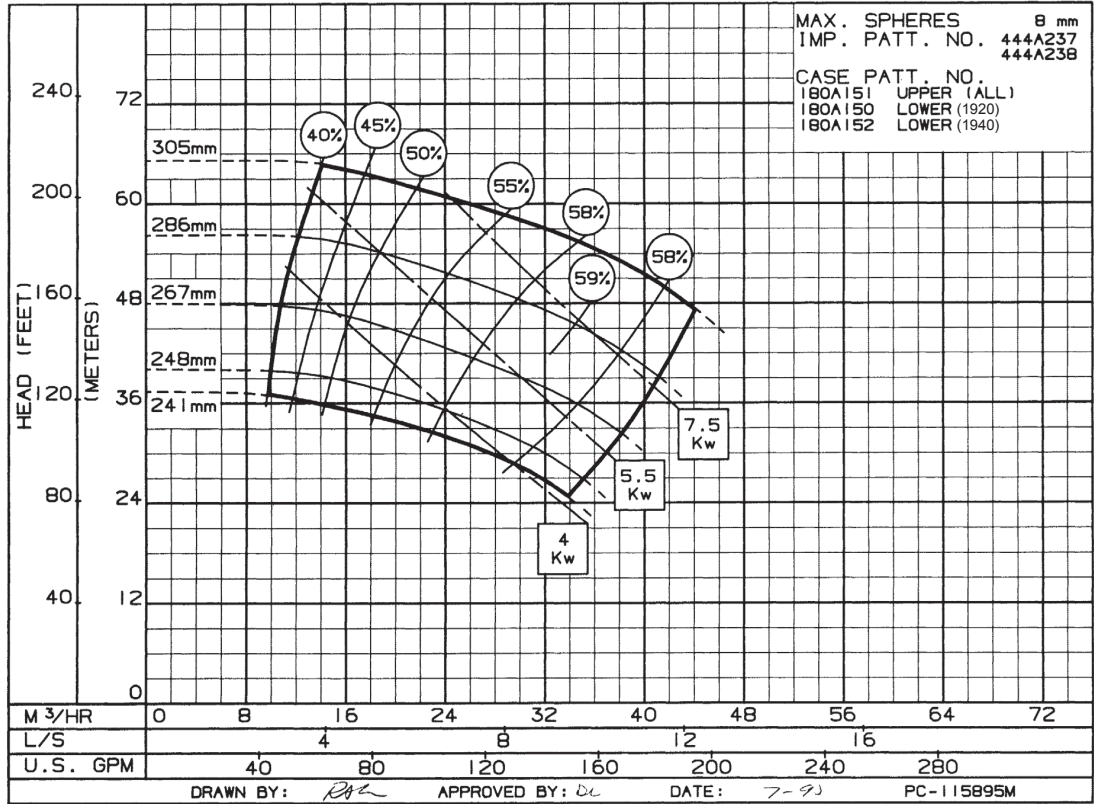
**6"**  
**1922B**  
**1475 RPM**  
 Impeller  
 444A341/342



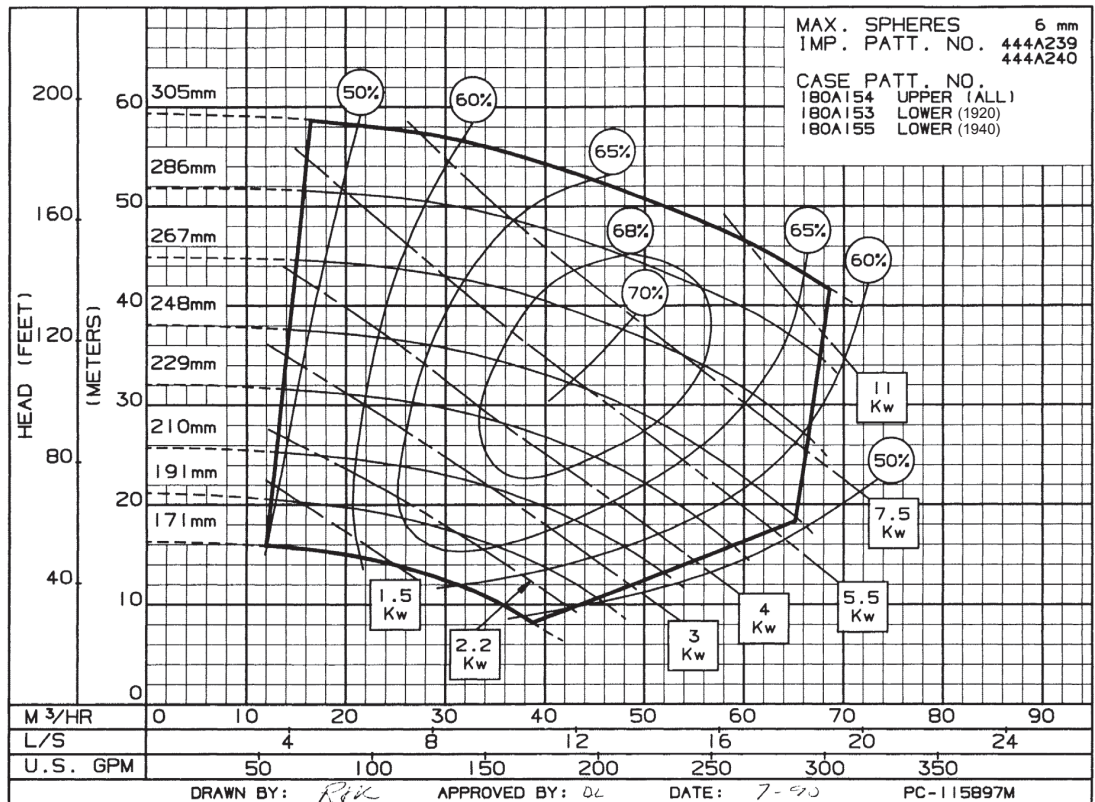
**2"**  
**1923A**  
**1440 RPM**  
 Impeller  
 444A235/236

## 1900 SERIES MULTI-STAGE SPLIT CASE PUMPS

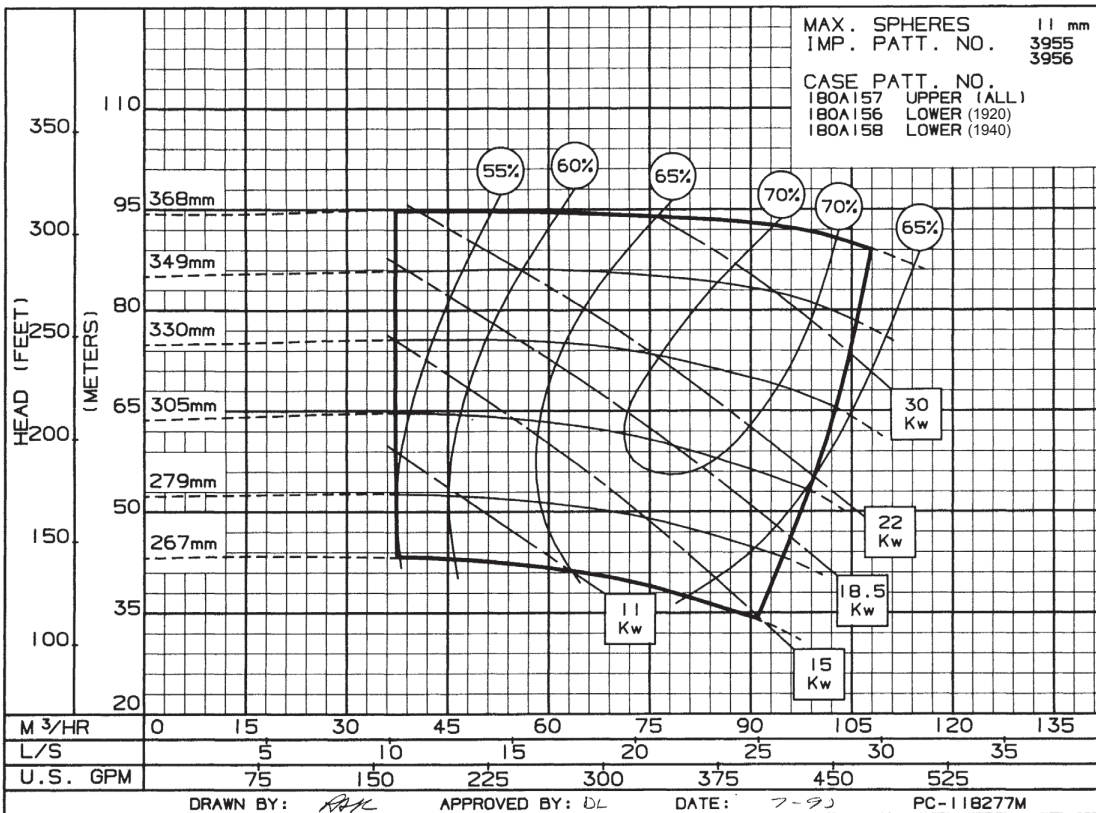
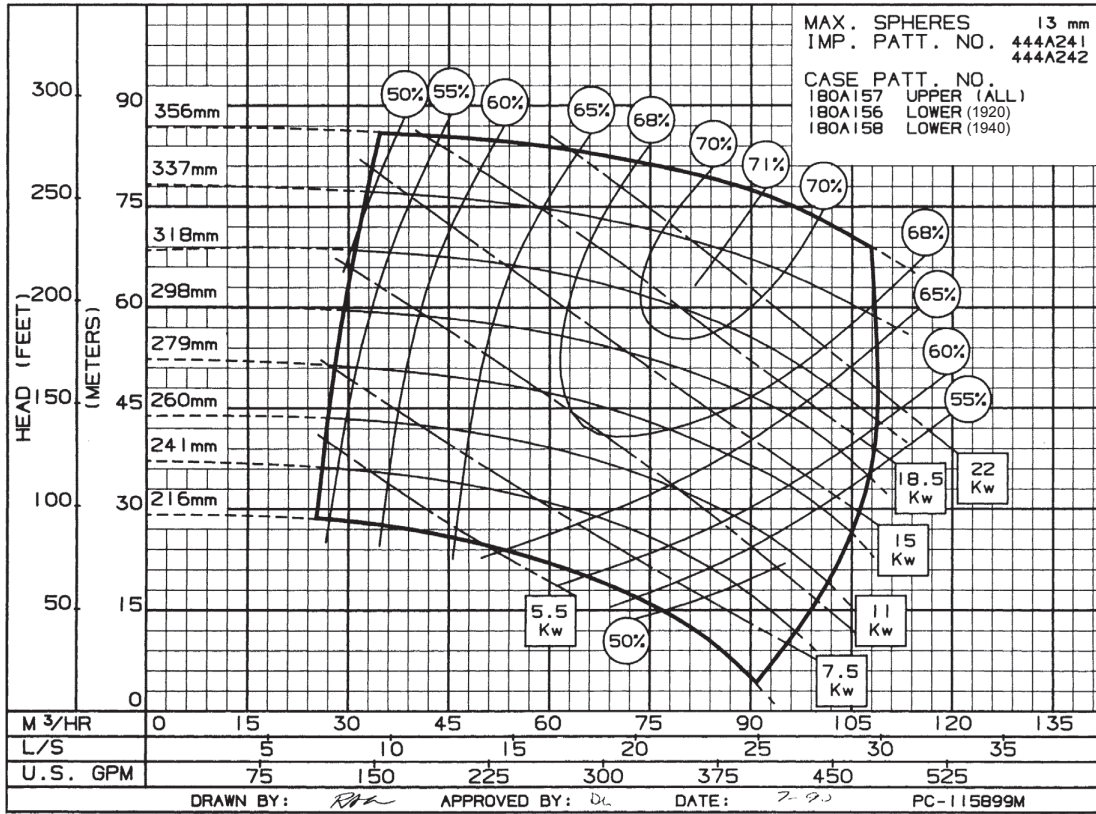
**2"**  
**1923B**  
**1440 RPM**  
Impeller  
444A237/238



**2-1/2"**  
**1922A**  
**1440 RPM**  
Impeller  
444A239/240

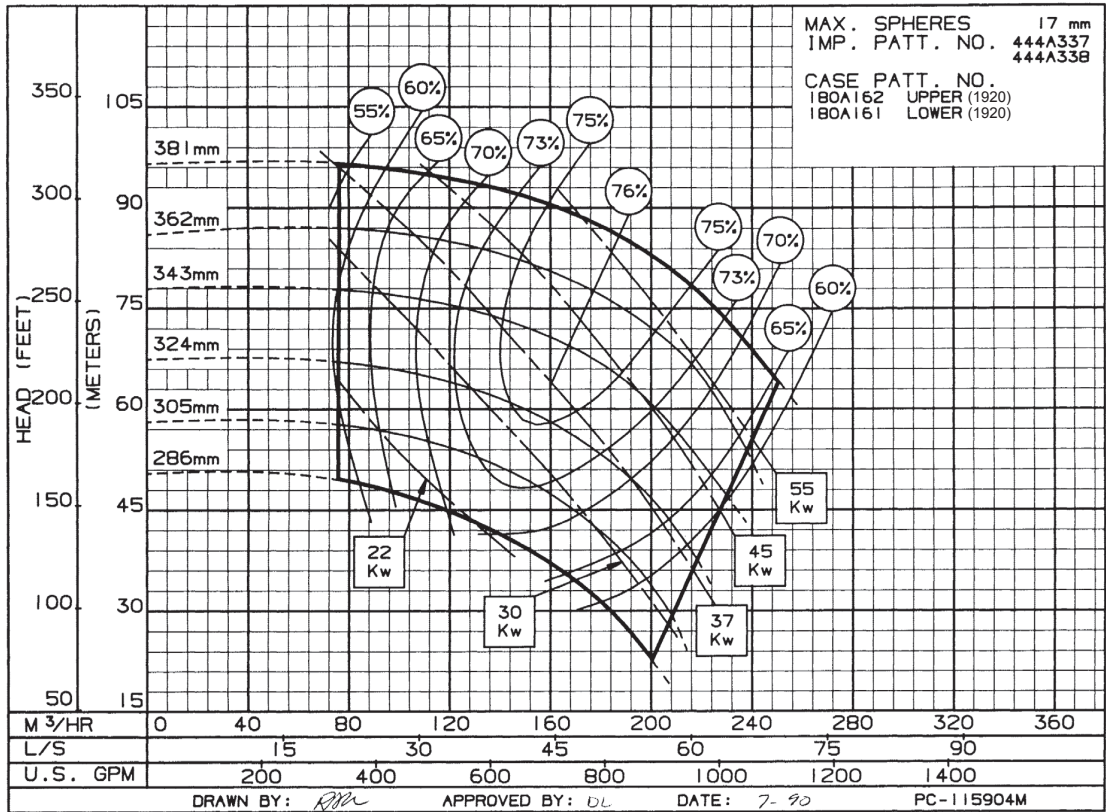


**1900 SERIES MULTI-STAGE SPLIT CASE PUMPS**

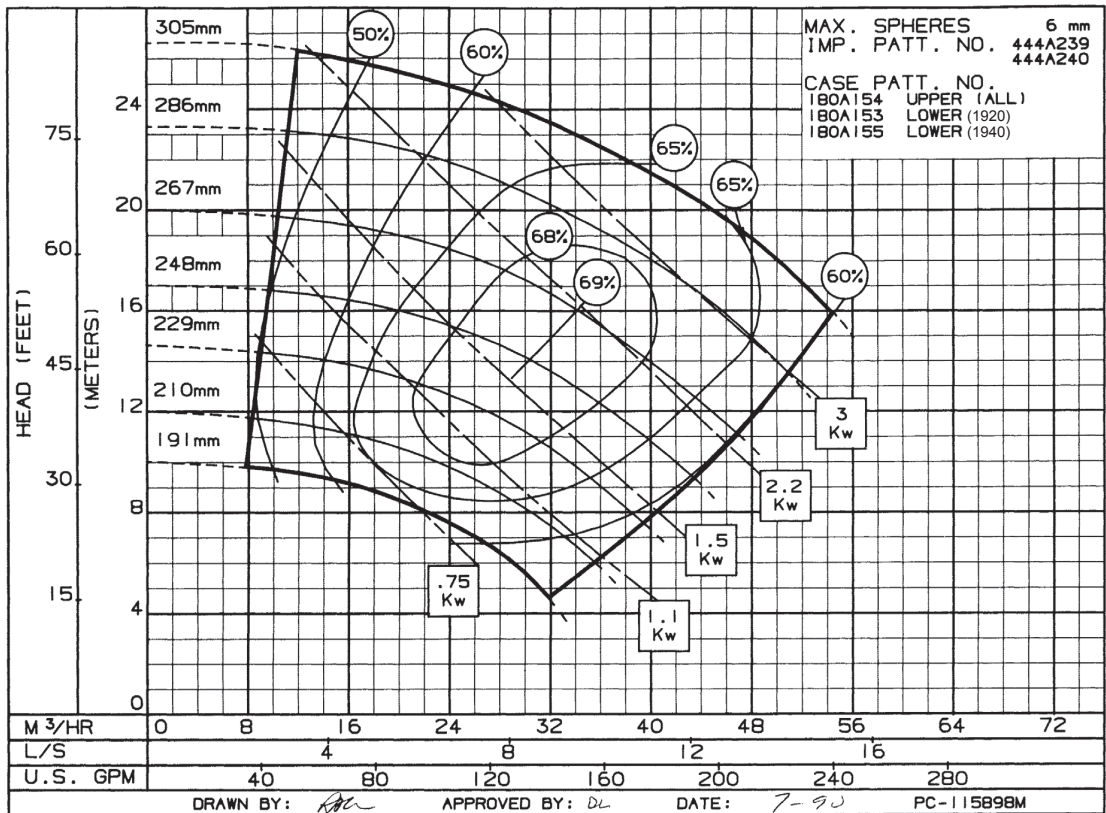


**1900 SERIES MULTI-STAGE SPLIT CASE PUMPS**

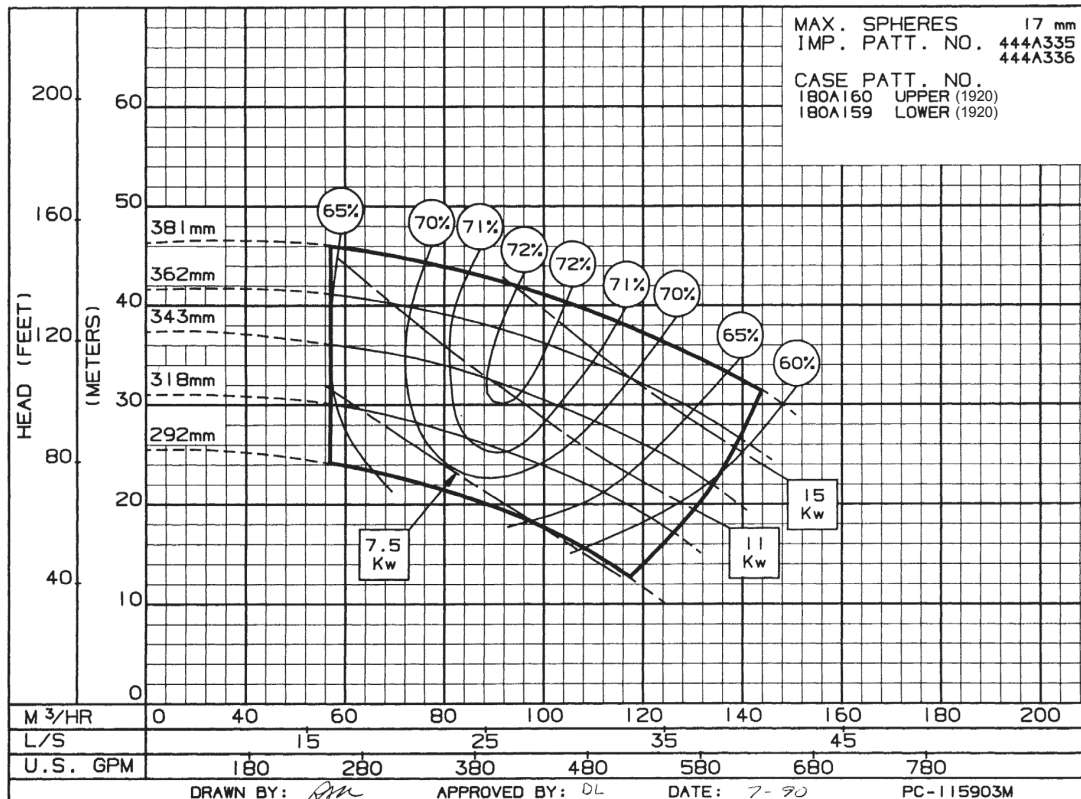
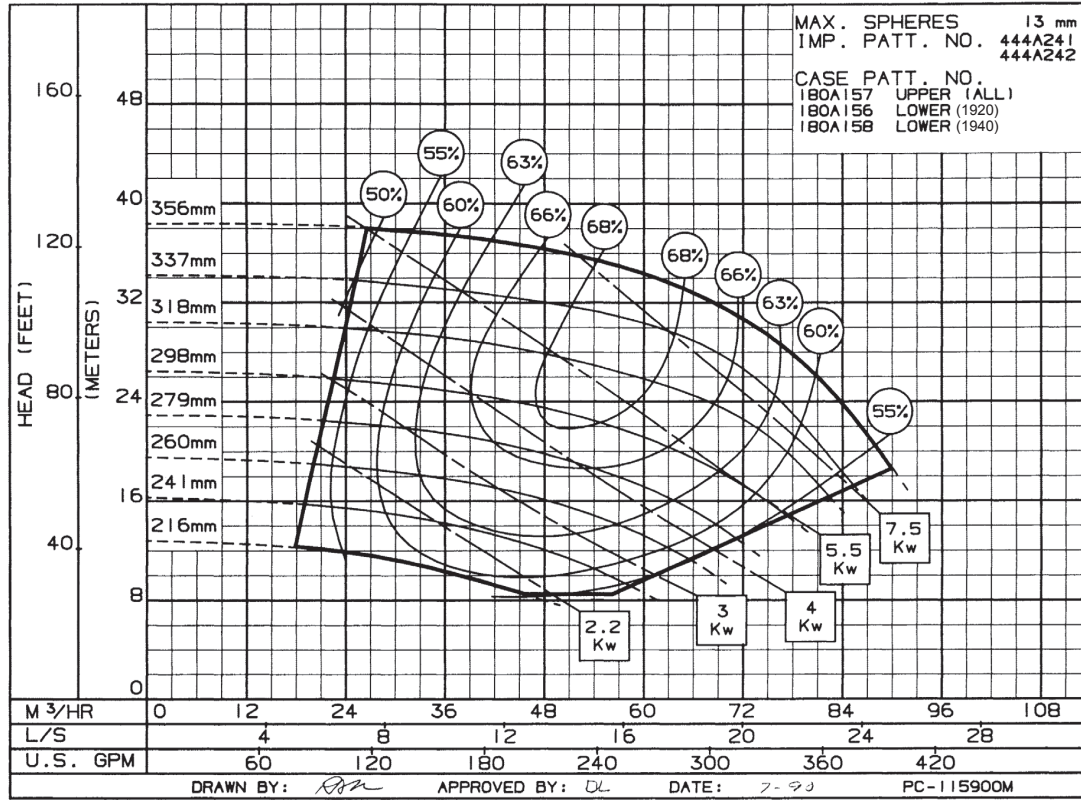
**5"**  
**1922**  
**1440 RPM**  
Impeller  
444A337/338



**2-1/2"**  
**1922A**  
**960 RPM**  
Impeller  
444A239/240



**1900 SERIES MULTI-STAGE SPLIT CASE PUMPS**



**1900 SERIES MULTI-STAGE SPLIT CASE PUMPS**

**6"**  
**1922B**  
**960 RPM**  
 Impeller  
 444A341/342

